



3-30-1968

Ametroproctus: a new genus of charassobatid mites from the United States. (Acari: Cryptostigmata: Charassobatidae)

Harold G. Higgins
Salt Lake City, Utah

Tyler A. Woolley
Colorado State University, Fort Collins

Follow this and additional works at: <https://scholarsarchive.byu.edu/gbn>

Recommended Citation

Higgins, Harold G. and Woolley, Tyler A. (1968) "*Ametroproctus*: a new genus of charassobatid mites from the United States. (Acari: Cryptostigmata: Charassobatidae)," *Great Basin Naturalist*: Vol. 28 : No. 1 , Article 5.
Available at: <https://scholarsarchive.byu.edu/gbn/vol28/iss1/5>

This Article is brought to you for free and open access by the Western North American Naturalist Publications at BYU ScholarsArchive. It has been accepted for inclusion in Great Basin Naturalist by an authorized editor of BYU ScholarsArchive. For more information, please contact scholarsarchive@byu.edu, ellen_amatangelo@byu.edu.

AMETROPROCTUS
A NEW GENUS OF CHARASSOBATID MITES
FROM THE UNITED STATES..
(ACARI: CRYPTOSTIGMATA: CHARASSOBATIDAE)

Harold G. Higgins¹ and Tyler A. Woolley²

Soil mites of the family Charassobatidae have been recorded previously from south and central America and New Zealand. In collections taken by the authors mainly in Utah and Colorado is a previously undescribed genus and species that is tentatively placed in this family. This new genus differs from other known charassobatids in having three claws and very large anal and genital apertures. It is placed in this family because of the large, projecting lamellae, the type of body setae, and the number of genital and anal setae. Limited collecting indicates that this new genus may be widespread in the mountains of western North America. A description of the genus and species follow below.

Ametroproctus n. gen.
(Figs. 5, 6)

Lamellae large, extending over top of rostrum with a trans-lamellae; lamellar and rostral hairs simple or feather-like; inter-lamellar hairs simple, small with tiny insertions; dorsosejugal suture distinct; dorsal setae small, inconspicuous, simple; sensillus clavate; large genital and anal apertures with four pairs of genital setae and two pairs of anal setae; legs heterotridactylus; hysterosoma tapered posteriorly; body covered with dense cerotegument. The generic name refers to the large anal aperture.

Ametroproctus oresbios n. sp.

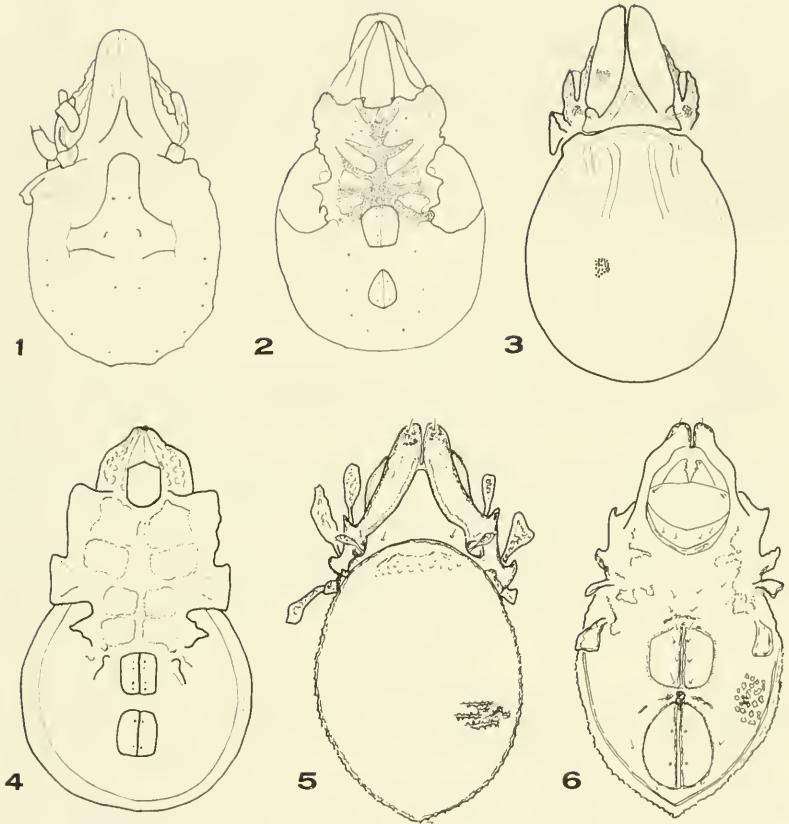
DESCRIPTION: Propodosoma about as long as wide; rostrum rather blunt, not visible from above; rostral hairs fine, simple; lamellae large, covering most of propodosoma, projecting beyond rostral tip; lamellar hairs simple; interlamellar hairs simple, small with tiny insertions located near level of exobothridial hairs; pseudostigmata cup-like directed up and out; sensillus clavate with a narrow pedicle and expanded setose head; dorsosejugal suture distinct, arched.

Hysterosoma generally oblong in outline tapering toward the posterior end; surface covered with a heavy cerotegument that hides the dorsal setae; dorsal surface as shown in Fig. 5.

Camerostome egg-shaped; ventral setae and apodemata as shown in Fig. 6; genital opening large, each cover with four setae; anal

1. 2965 South 14th East, Salt Lake City, Utah.

2. Department of Zoology, Colorado State University, Fort Collins, Colorado.



Figs. 1-2. *Charassobates cavernosus* Grandjean, 1929. Figs. 3-4. *Topalia problematica* Balogh and Csiszar, 1963. Figs. 5-6. *Ametroproctus oresbios* n. gen., n. sp.

opening large, pear-shaped, located close to genital opening with two simple setae on each cover; internal preanal piece present; heavy sclerotized bar between genital and anal plates at level of preanal piece; *ada*₁ posterior to anal plate; *ada*₂ lateral near middle of genital plate; fissure *iad* near anterior end of anal plate below sclerotized band.

Legs heavy, shorter than body, each with three unequal claws.

SIZE: length 645 μ ; hysterosoma 420 μ ; width 390 μ .

LOCALITY: The type and four paratypes taken from moss at Alta, Utah, 2 Sept., 1954 by H. Higgins; 1 specimen from Diamond Fork Canyon, Utah 17 June 1965 by H. Higgins; 3 specimens from lichens and moss at Ward, Colorado, 13 Sept., 1958 by T. A. Woolley; 2 specimens from moss on Half Hill at Bellevue, Colorado, 4 August

1965 by T. A. Woolley; 1 specimen from Cle Elum, Washington, 19 August 1956 by H. and M. Higgins.

DISCUSSION: The small sample of this new mite shows considerable variation in the size and length of the rostral and lamellar hairs, in the size and location of the translamellae, as well as in the amount of arching of the dorsosejugal suture. In two additional broken specimens the rostral and lamellar hairs are distinctly feather-like. Additional collection and studies are needed to show if these differences warrant the description of an additional species.

ARTIFICIAL KEY TO KNOWN GENERA

1. Genital and anal plates small; hysterosoma rounded posteriorly; legs with one claw 2
1. Genital and anal plates large; hysterosoma pointed posteriorly; legs with three claws *Ametroproctus* n. gen.
2. Dorsosejugal suture indistinct; sensillus spatulate; anal aperture diamond shaped *Charassobates* Grandjean, 1929
- Dorsosejugal suture distinct; sensillus with distinct head; anal aperture with nearly parallel sides
..... *Topalia* Balogh and Csiszar, 1963

REFERENCES

- BALOGH, J. 1961. Identification keys of world oribatids (Acari) families and genera. Acta. Zool. 7(3-4):243-344.
- . 1965. A synopsis of the world oribatid (Acari) genera. Acta. Zool. 11(1-2):5-99.
- BALOGH, J. AND J. CSISZAR. 1963. The zoological results of Gy. Topal's collectings in South America. Ann. Hist-Nat. Mus. Nat'l. Hung. 55:463-485.
- GRANDJEAN, F. 1929. Quelques nouveaux genera d'*Oribatei* der Venezuela et de Martinique. Bull. Soc. Zool. 54(5):400-423.
- HAMMER, M. 1966. Investigations on the oribatid fauna of New Zealand. Pt. I. Biol. Skr. Dan. Vid. Selsk. 15(2):3-108.