



1-1-2003

## End Matter

BYU Studies

Follow this and additional works at: <https://scholarsarchive.byu.edu/byusq>

---

### Recommended Citation

Studies, BYU (2003) "End Matter," *BYU Studies Quarterly*. Vol. 42 : Iss. 1 , Article 11.

Available at: <https://scholarsarchive.byu.edu/byusq/vol42/iss1/11>

This End Matter is brought to you for free and open access by the Journals at BYU ScholarsArchive. It has been accepted for inclusion in *BYU Studies Quarterly* by an authorized editor of BYU ScholarsArchive. For more information, please contact [scholarsarchive@byu.edu](mailto:scholarsarchive@byu.edu), [ellen\\_amatangelo@byu.edu](mailto:ellen_amatangelo@byu.edu).

## TO OUR READERS

*BYU Studies* is dedicated to the correlation of revealed and discovered truth and to the conviction that the spiritual and the intellectual can be complementary and fundamentally harmonious avenues of knowledge. This periodical strives to explore scholarly perspectives on Latter-day Saint topics. It is committed to seeking truth “by study and also by faith” (D&C 88:118) and recognizes that all knowledge without charity is nothing (1 Cor. 13:2). It proceeds on the premise that faith and reason, revelation and scholarly learning, obedience and creativity are compatible; they are “many members, yet but one body” (1 Cor. 12:20).

Contributions from all fields of learning are invited. *BYU Studies* strives to publish articles that openly reflect a Latter-day Saint point of view and are obviously relevant to subjects of general interest to Latter-day Saints, while conforming to high scholarly standards. *BYU Studies* invites poetry and personal essays dealing with the life of the mind, reflections on personal and spiritual responses to academic experiences, intellectual choices, values, responsibilities, and methods. All personal essays received will be entered in our annual personal essay contest. Short studies and notes are also welcomed.

Opinions expressed in *BYU Studies* are the opinions of contributors. Their views should not necessarily be attributed to The Church of Jesus Christ of Latter-day Saints, Brigham Young University, or *BYU Studies* editors, staff, or board members.

## INSTRUCTION TO AUTHORS

Guidelines for submitting manuscripts may be viewed on our website at  
<http://byustudies.byu.edu>

## SUBSCRIBERS' NOTICE

Subscription is \$5.00 for one issue (you may subscribe at this rate for as many future issues as you like); \$20.00 for one year (four issues); and \$45.00 for ten issues (tenth issue is free). Foreign subscriptions for Canadian residents are 1 yr., \$28.00; other non-USA residents, 1 yr., \$40.00 (airmail) or \$32.00 (surface). A price list for back issues is available upon request. All subscriptions begin with the forthcoming issue, or additional postage is charged. Address all correspondence to *BYU Studies*, 403 CB, PO Box 24098, Provo, Utah 84602-4098. You may also contact us by email: “[BYU\\_Studies@byu.edu](mailto:BYU_Studies@byu.edu)”; phone: (801) 378-6691; or fax: (801) 378-5386. **If you move, please notify us in writing four weeks before changing your address;** otherwise you must pay for replacement issues and mailing costs.

## PUBLISHED INDEXES AND ABSTRACTS

*BYU Studies* is abstracted in *Current Contents, Social and Behavioral Science*; indexed in *ATLA Religion Database* (published by the American Theological Library Association, Chicago, email: [atla@atla.com](mailto:atla@atla.com), website: <http://www.atla.com>) and *Index to Book Reviews in Religion*; and listed in *Historical Abstracts*; *Arts and Humanities Citation Index*; *America, History, and Life*; and *MLA International Bibliography*.

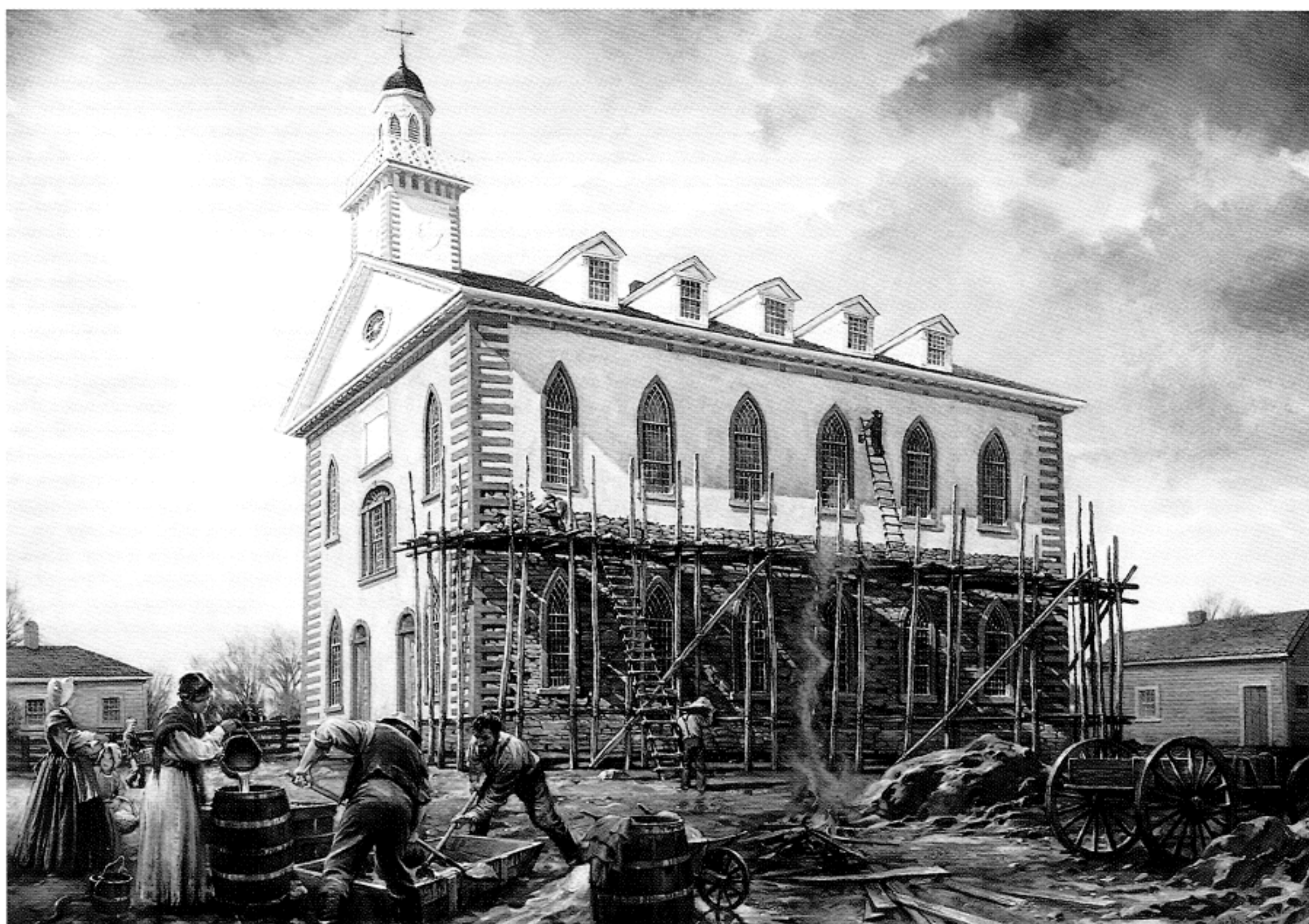
*BYU Studies* is published quarterly at Brigham Young University, Provo, Utah.

©2002 Brigham Young University, Provo, Utah. All rights reserved.

Printed in the U.S.A. on acid-free paper

4-90-46359-3.3M ISSN 0007-0106

**WRITING THE NEAL A. MAXWELL BIOGRAPHY**  
**THE CHURCH'S TEN YEARS IN MONGOLIA**  
**EDWARD PARTRIDGE, FIRST BISHOP OF THE CHURCH**  
**N. K. WHITNEY, BUSINESSMAN AND BISHOP**  
**REVIEWING THE MOUNTAIN MEADOWS MASSACRE**



FRONT COVER

**WINDOWS OF HEAVEN**  
**BY DAVID LINDSLEY (B. 1954)**

OIL ON LINEN, 72" X 48", 1999  
COURTESY MUSEUM OF CHURCH HISTORY AND ART

BACK COVER

**BUILDING THE KIRTLAND TEMPLE**  
**BY WALTER RANE (B. 1949)**

OIL ON CANVAS, 2002  
COURTESY MUSEUM OF CHURCH HISTORY AND ART