



3-1-2000

Front Matter

Follow this and additional works at: <https://scholarsarchive.byu.edu/inscape>



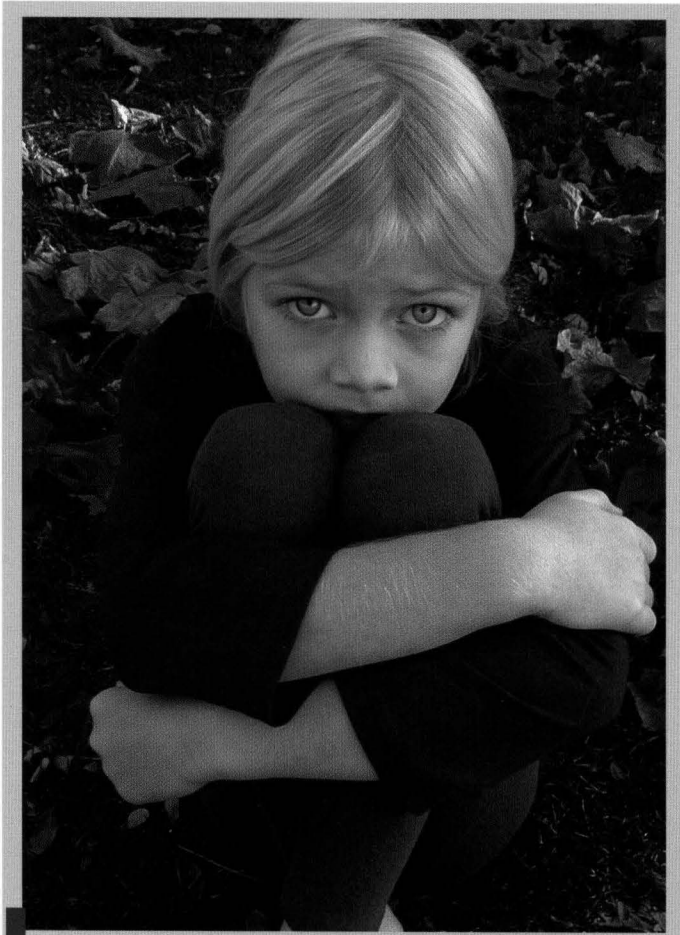
Part of the [Arts and Humanities Commons](#)

Recommended Citation

(2000) "Front Matter," *Inscape*: Vol. 20 : No. 1 , Article 2.

Available at: <https://scholarsarchive.byu.edu/inscape/vol20/iss1/2>

This Front Matter is brought to you for free and open access by BYU ScholarsArchive. It has been accepted for inclusion in *Inscape* by an authorized editor of BYU ScholarsArchive. For more information, please contact scholarsarchive@byu.edu, ellen_amatangelo@byu.edu.



Inscape

Brigham Young University Winter 2000

I n s c a p e

A creative writing journal for
Brigham Young University

Inscape is published twice each year as a cooperative effort of the BYU College of Humanities and the Department of English. The contents represent the opinions and beliefs of the authors and not necessarily those of the editors, our staff, our advisor, Brigham Young University, or its sponsoring institution, The Church of Jesus Christ of Latter-day Saints. Current students of BYU are invited to submit typed, double-spaced manuscripts to either the BYU English Department, 3146 JKHB, or to *Inscape*, CRWH, Provo, UT 84602. Any questions or comments may be directed to inscape@byu.edu or (801) 378-4455.

Cover art by Merete Grimmer
Printed by Brigham Young University Press
All rights reserved. Copyright 2000

I n s c a p e

W i n t e r 2 0 0 0

V o l u m e 2 0
I s s u e 1

Editor	Kristine Fielding
Assistant Editor	Nathan R. Cox
Web Designer	Greg Taylor

S t a f f

Alisa Baxter	Kaare Revill
Chris Bergaust	Meredith Reynolds
Mandy Campbell	Mike Riding
Karen Cromar	Jenny Roueche
Kristen Eldredge	Elise Smith
Daniel Evans	Rachel Smith
Cristy Fathers	Laura Stott
Mindy Gerun	Laura Summerhays
Nicole Gharda	Joy Tang
Billy Hereth	Alicia Thomas
Holli Keel	Jennifer Thompson
Rachael Lauritzen	Emily Wegener
Sarah Pierce	Eliza Ybarra

Photographer	Merete Grimmer
Advisor	Linda Hunter Adams

TABLE OF CONTENTS

POETRY

- 7 SPACE
 WILLIAM DEFORD
- 18 NAVY SEALS
 ERIC FREEZE
- 25 FARMER'S BURIAL GROUND
 E. L. MILLER
- 26 (poh-i-tree) *n.*
 SCOTT HANSEN
- 42 CHALK CIRCLE
 KIMBERLY PATTERSON
- 43 NOONDAY ELEGY
 WALTER RHEAD
- 51 WALKING RUSSIA
 WALTER RHEAD
- 54 THERE IS LITTLE STILLNESS IN DEVOTION
 SCOTT CAMERON
- 64 VENICE, OUR FIRST TIME
 SALLY STRATFORD
- 67 MOTHER WITH NEWBORN
 ERIC FREEZE
- 68 FOUR WISHES
 MARILYN NELSON

WHAT FREEDOM 77
JEAN JONES

PRAIRIE 85
ERIC FREEZE

3:48 BREAKFAST 86
E. L. MILLER

PERSONAL ESSAY

HYDROGEN 21
JANE GALT

JERUSALEM 45
RIXA ANN FREEZE

SHORT STORY

NOVEMBER FIRST, ONE A.M. 9
BRIAN JACKSON

NATURAL HABITATS 27
MELODY WARNICK

CUP OF TREMBLING 33
HYRUM LATURNER

SLENDERIZING 55
MELODY WARNICK

GAMBLER 71
MEGHAN ENGELHARDT

DIARY OF A DAUGHTER 79
E. L. MILLER

CONTRIBUTORS 87

Inscape
is the inward quality
of objects, as they are perceived
by the joined observation and introspection
of a poet, who in turn embodies them in unique poetic
forms.

Gerard Manley Hopkins