



1-1-1972

Introductory Pages

BYU Studies

Follow this and additional works at: <https://scholarsarchive.byu.edu/byusq>



Part of the [Mormon Studies Commons](#), and the [Religious Education Commons](#)

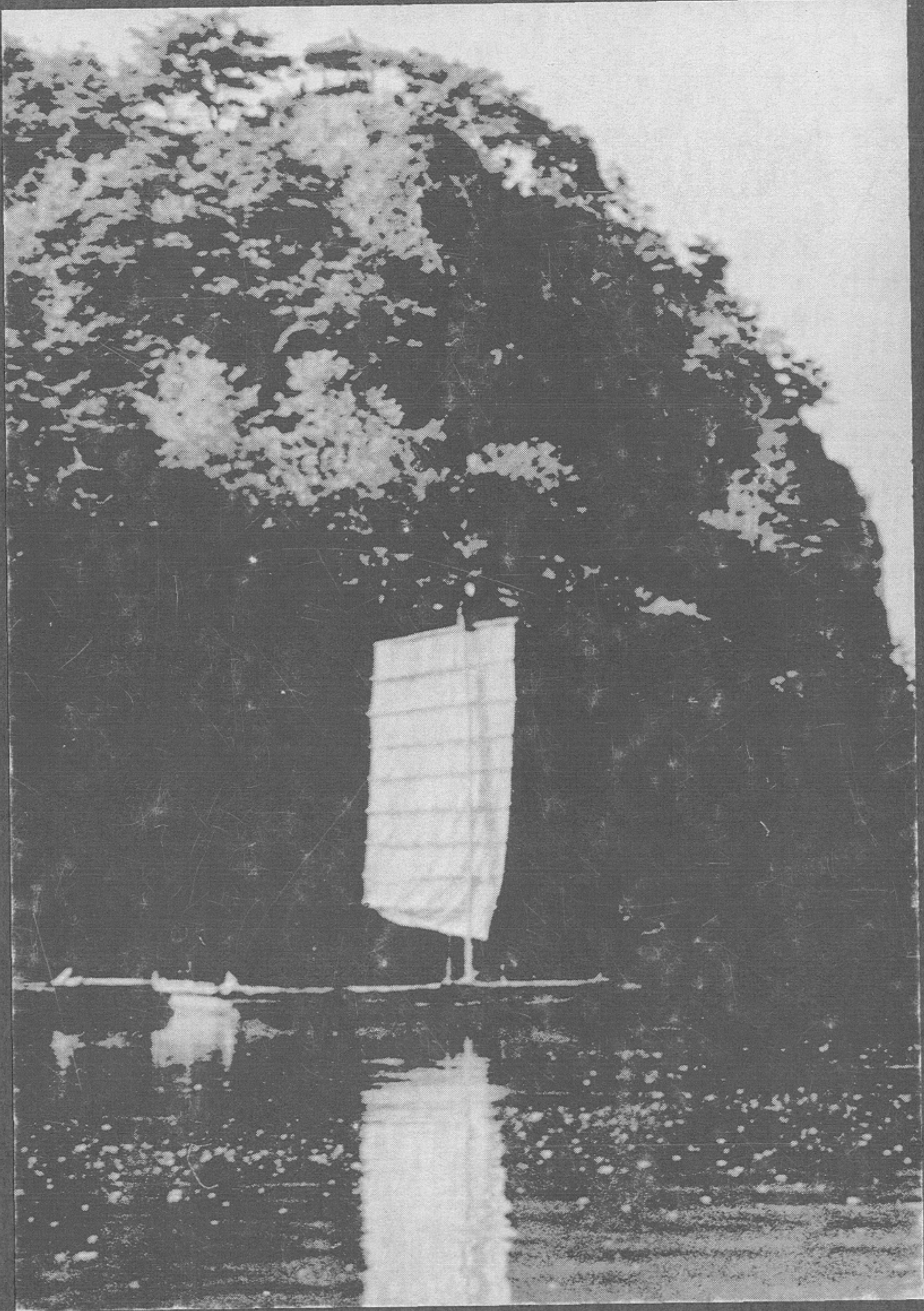
Recommended Citation

Studies, BYU (1972) "Introductory Pages," *BYU Studies Quarterly*. Vol. 12 : Iss. 1 , Article 1.

Available at: <https://scholarsarchive.byu.edu/byusq/vol12/iss1/1>

This Introduction is brought to you for free and open access by the Journals at BYU ScholarsArchive. It has been accepted for inclusion in *BYU Studies Quarterly* by an authorized editor of BYU ScholarsArchive. For more information, please contact scholarsarchive@byu.edu, ellen_amatangelo@byu.edu.

BYU studies



A Voice for the Community of LDS Scholars
Autumn 1971 Brigham Young University

COVER: Typical of flat-bottomed sailing boats which have plied the coasts of eastern Asia for many hundreds of years, this is a scene from Nakhwa'am, South Korea. Interest in this picturesque area is enhanced by a popular tradition, which dates back to the seventh century, in which 3,000 Korean ladies of the Paekche dynasty reportedly jumped to certain death from the rugged cliffs into the sea rather than submit to invading T'ang Chinese troops.

EDITORIAL BOARD

RICHARD L. ANDERSON	professor of history and religion, Brigham Young University
EUGENE C. CAMPBELL	professor of history, Brigham Young University
JOE J. CHRISTENSEN	associate commissioner, Church Education
STANFORD CAZIER	president, Chico State College
HOLLIS R. JOHNSON	professor of astronomy, Indiana University
EDWARD L. KIMBALL	professor of law, University of Wisconsin
NEAL E. LAMBERT	assistant professor of English, Brigham Young University
T. EDGAR LYON	research historian, Nauvoo Restoration, Inc.
QUINN G. MC KAY	professor of American enterprise mgt., Texas Christian Univ.
KEITH R. OAKES	administrator, elementary-secondary schools, Church Education
EARL E. OLSON	assistant Church historian, Church Historian's Office
ERNEST L. OLSON	director, university press, Brigham Young University
SPENCER J. PALMER	professor of history and religion, Brigham Young University
DOUGLAS H. PARKER	professor of law, University of Colorado
BLAINE R. PORTER	dean, college of family living, Brigham Young University
CHAUNCEY C. RIDDLE	dean, graduate school, Brigham Young University
CHARLES D. TATE, JR.	associate professor of English, Brigham Young University
BRUCE B. CLARK	dean, college of humanities, Brigham Young University

BYU studies

A Voice for the Community of LDS Scholars
Autumn 1971 Brigham Young University

VOLUME XII

AUTUMN 1971

NUMBER 1

Guest Editor's Prologue | Spencer J. Palmer 3

THE UNITED STATES AND ASIA

American Foreign Policy:
Focus on Asia | Roger Hilsman 9

The People's Republic:
Communist or Chinese? | John K. Fairbank 23

North Korea:
Between Dogmatism and Revisionism | Chong-Sik Lee 39

Buddhist Imagery | Richards Edwards 55

THE CHURCH AND ASIA

A MOUNTAIN STREAM, A Painting | Tsun-pin Lin 76

Unto All Men | Howard W. Hunter 79

Problems and Opportunities
Of Missionary Work in Asia
(A Symposium of Former
Mission Presidents) | R. Lanier Britsch, Moderator 85
Paul S. Rose
H. Grant Heaton
Adney Y. Komatsu
Spencer J. Palmer

Resources in the Church Historian's Office
Relating to Asia | Robert H. Slover II 107

The Historians Corner | James B. Allen, Ed. 119

Book Reviews 131

Guest Editor | Spencer J. Palmer

Editor | Charles D. Tate, Jr.

Book Review Editor | Spencer J. Palmer

University Editor | Ernest L. Olson

Editorial Assistant | Brian R. Utley

The opinions and statements expressed by contributors to *Brigham Young University Studies* are their own and do not necessarily reflect the views of The Church of Jesus Christ of Latter-day Saints, Brigham Young University, the editor or editorial board.

Brigham Young University Studies is published quarterly by Brigham Young University Press. Send manuscripts to Brigham Young University, Editor, *Brigham Young University Studies*, 283 JKBA, Provo, Utah 84601. Enclose self-addressed, stamped envelope.

Subscription is \$7.00 for four numbers; \$12.00 for eight numbers; and \$16.00 for twelve numbers. Single copies are \$2.00 each. The rate to bona fide students is \$5.60 for four issues. All subscriptions begin with the Autumn issue and run through an entire volume year. Subscriptions received after one or two issues of that volume have been published will include those issues and they will be mailed with the receipt for the subscription. Subsequent issues for that volume will be mailed upon publication. Send subscriptions to Brigham Young University, Publication Sales Department, 205 UPB, Provo, Utah 84601.