



4-1-2003

## Back Matter

AMCAP Journal

Follow this and additional works at: <https://scholarsarchive.byu.edu/irp>

---

### Recommended Citation

Journal, AMCAP (2003) "Back Matter," *Issues in Religion and Psychotherapy*. Vol. 28 : No. 1 , Article 12.  
Available at: <https://scholarsarchive.byu.edu/irp/vol28/iss1/12>

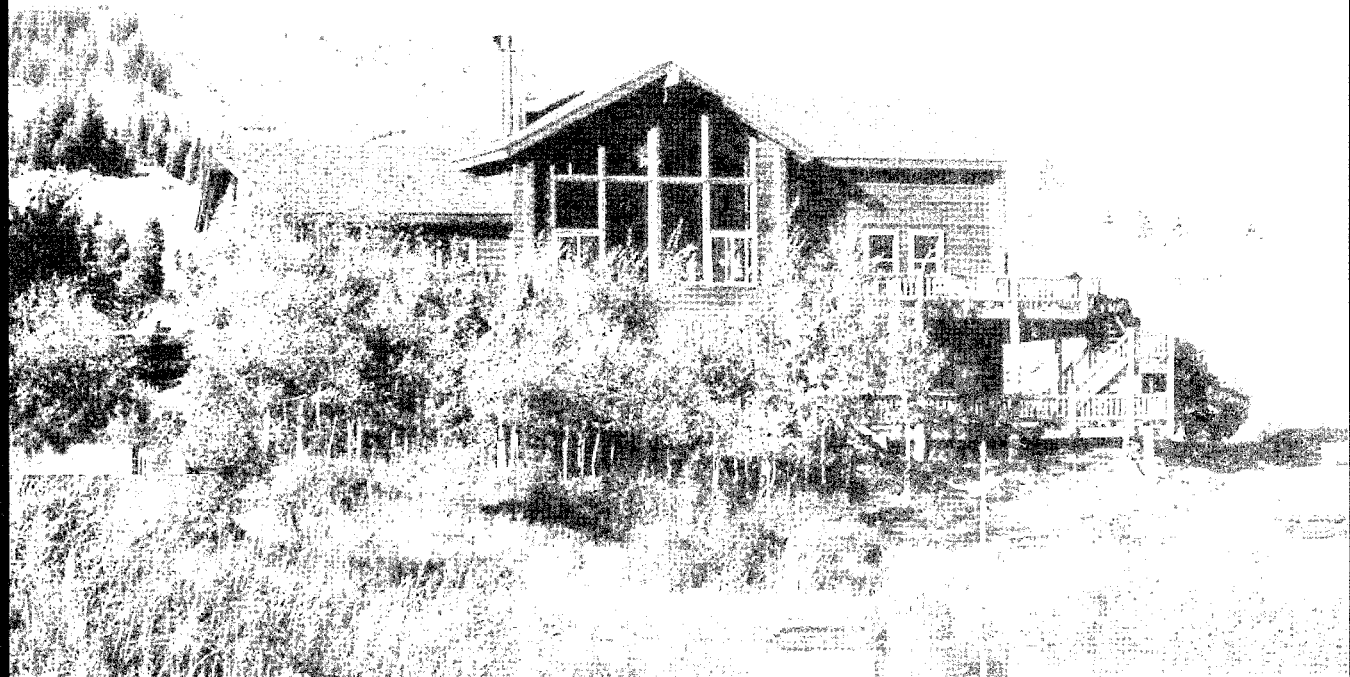
This Back Matter is brought to you for free and open access by the Journals at BYU ScholarsArchive. It has been accepted for inclusion in *Issues in Religion and Psychotherapy* by an authorized editor of BYU ScholarsArchive. For more information, please contact [scholarsarchive@byu.edu](mailto:scholarsarchive@byu.edu), [ellen\\_amatangelo@byu.edu](mailto:ellen_amatangelo@byu.edu).

Nestled in the Wasatch Mountains surrounding Park City, Utah,  
**Renaissance Ranch** provides a unique Residential and

Outpatient recovery experience  
utilizing traditional treatment  
methods in union with  
spiritual and Gospel  
centered solutions.\*



TREATING ADDICTIONS THROUGH GOSPEL CENTERED SOLUTIONS



**A Time of Rebirth and Renewal**

° 4383 West Kilby Road • Park City, Utah • 435-940-0406 • Fax 435-940-0506  
1-877-REN RANCH • [hope@renaissanceranch.net](mailto:hope@renaissanceranch.net) • [www.renaissanceranch.net](http://www.renaissanceranch.net)

*\*All services provided by Renaissance Ranch are consistent with LDS Gospel standards and principles.*

This summer, walk the paths of the ancient ones ...

# ANASAZI

## LEADERSHIP CHALLENGE

for Young Men and Women 12-17 years old

*A journey to enhance personal performance.*

July 14-19, 2004 (girls)

July 21-26 (boys)

July 28-August 2 (girls)

August 4-9 (boys)

This six-day course is patterned after the acclaimed Outdoor Survival programs developed by Larry D. Olsen and Ezekiel C. Sanchez. Through a challenging yet quiet walking in the wilderness, participants learn principles of leadership that when lived ensure...

- ◆ Improved School Performance
- ◆ Happier Family life
- ◆ Healthier Body, Mind, and Spirit
- ◆ Greater Clarity and Focus

Tuition: \$1,250

For reservations call 800 678-3445

The Anasazi Leadership Challenge is presented by ANASAZI Foundation. ANASAZI Foundation is a non-profit 501c3, Nationally Accredited Behavioral Healthcare provider for youth and young adults (see [anasazi.org](http://anasazi.org)). The course will be conducted in the Tonto National Forest near Young, Arizona. Space is limited to nine participants per week. Participants must be physically able to handle the rigors of the ANASAZI trail. Parents are responsible for providing transportation to and from the ANASAZI Foundation office in Mesa, Arizona or the Phoenix Sky Harbor Airport, on the first and last day of the course.

## Guidelines for Book & Media Reviewers

**T**hank you very much for your interest in reviewing books for the journal. Book reviews are an important part of professional journals. Reviews alert busy clinicians and academicians to resources that may help them and their patients/students, and also keep them current with the world of ideas relating to their profession and responsibilities.

### Content

Reviews should include a synopsis of the book's content and a critical assessment of its value for the field—both strengths and weaknesses. The reviewer should also state what types of readers would most benefit (or not benefit). Because book reviewing is an art as well as a scholarly activity, you are encouraged to express your individuality. The first person may be used, which is often livelier and more interesting to read than the more formal passive voice (for example, "I found this concept intriguing" as opposed to "This concept was found to be intriguing"). As appropriate, do make comparisons with other works on the topic and specifically comment on the preface, bibliography, glossary, or index. Note that book titles are not always devised by the authors so may at times be misleading.

### Format

On the top of the first page, indicate title, author(s), and publication information as follows:

*Current Psychotherapies*, 6th edition. Edited by Raymond J. Corsini & Danny Wedding. Itasca, IL: F.E. Peacock Publishers, Inc., 2000. xii+491 pages, illus., photo., gloss., index. ISBN 0-87581-430-1, paper, \$60.00.

At the end of the review, give your name, degree, exact title and professional affiliation; for example:

Victor B. Cline, PhD	Robert H. Coombs, PhD, MFT
Clinical Psychology	or Professor
Private Practice	UCLA School of Medicine
Salt Lake City, UT	Los Angeles, CA

Double-space everything in the manuscript. Use a 12-point font if possible. Please consult the Journal "Instructions for Contributors," found in each issue. Beyond guidelines in these instructions, which take precedence, the style for text and references should follow the *Publication Manual of the American Psychological Association*, 5<sup>th</sup> edition (2001).

Your review will be edited for clarity and format. Changes may also be suggested; this is more likely if a review is overwhelmingly negative or positive without supporting information. Any other than routine editorial corrections will be sent back to you for approval.

### Length

Reviews should run from 250 to 1000 words, or 1 to 4 pages; longer if agreed upon in advance. We welcome concise reviews as well as comparative reviews of several works (which can of course be longer).

### Deadline

When invited to review a book, please return the review within 8 weeks (or by another agreed-upon date). Please let us know in advance if you need more time.

### Submission format

It is preferred that you e-mail your review, both as part of your message and as an attachment (in Microsoft Word or Rich Text format). Please include with all reviews your address, phone number, fax, and e-mail. *continued on next page...*

### Additional Information

If the Journal sends you the book to review, it is yours to keep. Book reviews may be solicited (we and you agree in advance) or unsolicited (you sent in your review without querying first), but we reserve the right to reject or heavily edit unsolicited reviews. Please let us know about forthcoming (and already published) books which you suggest be reviewed (and whether you are willing to review them or not). Thank you.

Richard G. Ellsworth PhD, Editor  
<amcapjournal@byu.edu>

Rachel E. Crook-Lyon PhD, Associate Editor  
<rec2@email.byu.edu>

Garison L. Jeppesen LCSW, Associate Editor  
<garison.jeppesen@hsc.utah.edu>

AMCAP, 2540 East 1700 South  
Salt Lake City UT 84108

## ETERNAL VALUES & PERSONAL GROWTH

a self-improvement book by eminent  
Latter-day Saint psychologist  
Allen E. Bergin, Ph.D.  
and eight  
other leading  
contributors

An LDS approach to guide you  
on your journey to spiritual,  
emotional, and social wellness



274 pages • \$29.95 • 8.5" x 11"  
to order: [byustudies.byu.edu](http://byustudies.byu.edu)

JOURNAL OF THE ASSOCIATION OF MORMON COUNSELORS & PSYCHOTHERAPISTS

## Instructions for Contributors

The *AMCAP Journal* seeks manuscripts of interest to the broad interdisciplinary membership of the Association. The *AMCAP Journal* is a peer-reviewed journal addressing the interface between revealed religion and psychology; specifically, issues of spirituality and the influence of LDS church doctrine in psychotherapy, including the study of counseling in a spiritual context. It is devoted to influencing the field of counseling and psychotherapy through the study of related scholarship in religion, LDS doctrine, spirituality and ethics throughout the world. Appropriate manuscripts may be literature reviews, clinical case reviews, research reports, educational program reports, media reviews (books, audiovisuals, internet resources), scholarly commentary, theoretical or descriptive clinical practice articles, reports of AMCAP Conference presentations, interviews, or letters to the editor. Articles may relate to theories of counseling and psychotherapy, family therapy or social work; or may deal with the application of spirituality or church doctrine to understanding psychological processes or questions of ethical practice.

Manuscripts submitted to the *AMCAP Journal* are accepted for consideration with the understanding that they represent original material, have not been published elsewhere, and are not being considered for publication elsewhere. All manuscripts should be submitted via email to either of the Associate Editors:

Garison L. Jeppesen LCSW  
<garison.jeppesen@hsc.utah.edu>  
Rachel E. Crook-Lyon PhD  
<rec2@email.byu.edu>

Please email the manuscript, including any tables/charts or graphics, as an attachment. Also please mail a copy of the complete manuscript on computer

disk. It is not necessary to mail a printed copy. The email attachment and disk copy should be in Microsoft Word or Rich-Text format. Disks should be mailed to:

Rachel E. Crook-Lyon PhD, 340 Q-MCKB,  
Brigham Young University, Provo UT 84602

or

Garison L. Jeppesen LCSW, University of Utah  
Neuropsychiatric Institute,  
501 Chipeta Way, Suite 1301, Salt Lake City UT 84108.

**Cover Letter - copyright information:** Please include in the cover letter a mailing address for the corresponding author, a daytime telephone number, a fax number, and an email address. A transmittal letter must accompany the manuscript which contains the following:

"In consideration of the Association of Mormon Counselors and Psychotherapists (AMCAP) taking action in reviewing and editing my (our) submission, the undersigned author(s) hereby transfers, assigns, or otherwise conveys to AMCAP all copyright ownership rights in the manuscript, and all rights subsumed thereunder under the copyright laws of the United States and all foreign countries, in the event the manuscript is published by the AMCAP Journal. Author(s) represents and warrants that Author(s) is the sole author of the manuscript, that the manuscript is original except for necessary quotations or paraphrases for which the source has been credited, and that the manuscript does not infringe upon the copyright or other ownership rights of any other person or entity, or contain any matter that may be libelous or otherwise actionable; and Author(s) agrees to defend, save harmless and indemnify AMCAP and its Journal Editor, officers, directors, agents and employees, and each of them, from and against any and

all claims, losses, liability, damages, and expenses for breach of these warranties.”

If there are extensive quotations (over 500 words) in the manuscript, authors must obtain letters of permission for their use. A copy of the permission-granting letter should accompany the manuscript.

**Review Process:** All papers submitted will be reviewed by the Editor and two or more Consulting Editors. Reviewers' comments will be sent to the authors when they would be useful to them. Reviewers will remain anonymous. Manuscripts will be acknowledged by the editor upon receipt. Every effort is made to inform authors of publication decisions within three months. If revisions are required, the Editor may choose either to accept revisions without additional review, or to put the revised manuscript through the entire review process again. Once a manuscript is accepted for publication, three to six months will elapse before the article appears in published form in the *AMCAP Journal*.

**Style Specifications:** Unless contradicted by instructions on this page, manuscripts should be prepared according to the style guidelines given in the *Publication Manual of the American Psychological Association*, 5<sup>th</sup> edition, 2001. The entire manuscript should be double-spaced with separate pages for each of the following: title page, abstract, references, footnotes, tables, figures and figure captions.

**Author information:** All information identifying the author(s) must only be on the title page.

**Title page:** The title page must include:

1. the number of words in the text of the paper
2. title of the article - usually approximately 10 - 14 words
3. author(s) name(s), degree(s), and institutional affiliation(s). If the author(s) is not affiliated with an institution, please list city and state.
4. running head (i.e., an abbreviated title of less than 50 characters, including spaces)
5. a brief statement describing the author's affiliation, acknowledgements, and which author should receive correspondence (with a permanent address, including

email address). For example: *John J. Smith PhD, a graduate of Cornell University (PhD), is Professor of Psychology at McGill University in Montreal. Janice F. Jones MD graduated from Harvard Medical School and is a psychiatrist in private practice in Buffalo, New York. This study was supported by Health Canada NHRDP Grant #8888-8888-888, and a grant by Pfizer Inc. to Dr. Jones. The authors thank Jane Johnson for her helpful comments on the manuscript. Address for correspondence: John J. Smith PhD, Dept. of Psychology, McGill University, 300 Penfield Ave., Montreal Quebec, Canada H3H1B1. email: <jjsmith@mcgill.edu.ca>*

**Abstract:** The abstract should summarize the paper in approximately 75 to 300 words.

**Text:** Use the active voice as much as possible and use the first person only when referring to the author.

**Patient Anonymity:** Both ethical and legal considerations make it necessary to protect a patient's anonymity in reports. Identifying information (including the use of initials) should be avoided, and any identifying information in the discussion of the personal history should be adequately disguised.

**Headings:** First-level headings should be centered with upper and lower case letters. Second-level headings should be at the left margin with upper and lower case letters. Third-level headings, if necessary, should be indented with upper and lower case letters.

**Text Citations:** Use the author-date citation method; i.e., author surname and year of publication. For example: (Jones, 1999). If there is more than one author, use an ampersand [&] in citations. When a work has more than two authors, cite all authors the first time the reference occurs; in subsequent citations only cite the surname of the first author, followed by "et al." For example: (Smith, Johnson & Jones, 1999) then (Smith, et al., 1999).

**Reference List:** Every work cited should be listed in alphabetical order, by author surname, on a separate page titled "References." Use an ampersand [&] when there are two or more authors. See the *APA Publication Manual* for specific details regarding citation styles for books, journals, and other materials.

### TYPES OF ARTICLES AND USUAL LENGTHS

**Special Articles** are overview articles that bring together information on a topic related to the Journal's mission (as outlined in the first paragraph, above). Such articles are usually no more than 7000 words in length (excluding tables and references). It is advisable to check with the Editor before submitting this type of article to be sure that a similar one is not already being processed.

**Regular Articles** describing research, multiple related case reports, theoretical papers and so forth, usually contain no more than 4000 words (excluding tables and references).

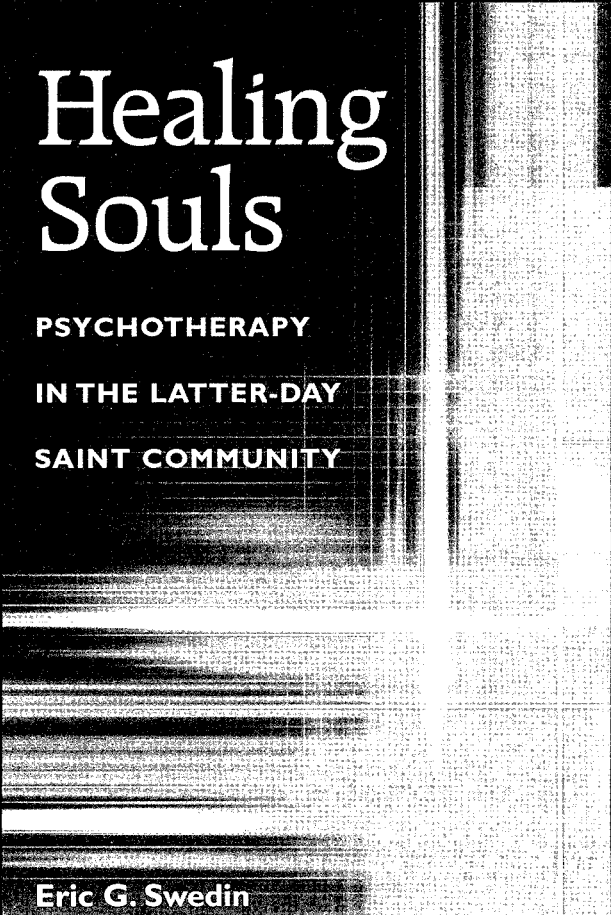
**Case Reports** are often quite interesting, and a report of a series of cases can be especially important and useful. Even single-case reports warrant publication if they illustrate new insights or are in some way unique. Single-case reports should contain no more than 2000 words. The organization of a case report includes: a brief

introduction with a literature review, the case history, a concise description of the treatment intervention, a report of results with follow-up, and a discussion of the significance of the case.

**Interviews:** Please query the Editor before submitting an interview article.

**Book and Media Reviews** (including audiovisual and internet resources): The Journal actively solicits media reviews from qualified reviewers. Media review manuscripts should follow the guidelines on this page and in the journal's "Guidelines for Book and Media Reviewers."

**Letters to the Editor** should include a notation that the letter is for publication. The letter must be signed by all authors. Any letter discussing an article in the *AMCAP Journal* will automatically be sent to the author of the article. All letters will be edited before publication.



In this first history of psychotherapy among the Latter-day Saints, Eric G. Swedin describes how modern psychology has affected the "healing of souls" in the LDS community. He also shows how this community melded its theological doctrines with mainstream psychiatry when secular concepts clashed with fundamental tenets of Mormonism.

Swedin portrays the rise of professional organizations like the Association of Mormon Counselors and Psychotherapists, as well as the importance of Allen E. Bergin, first director of the BYU Institute for Studies in Values and Human Behavior. Bergin and others paved the way for the LDS adoption of professional psychotherapy as an essential element of their "cure of souls."

*Healing Souls* contributes to a more complete historical picture of the mental health professions in North America, and a better understanding of how religious traditions and psychology have influenced each other.

HARDCOVER, \$34.95

Call 800-537-5487, or visit [www.press.uillinois.edu](http://www.press.uillinois.edu)  
UNIVERSITY OF ILLINOIS PRESS



# Spring Convention 2004 April 1-2, 2004

Joseph Smith Memorial Building in Salt Lake City

## Creating Connections: Clients, Therapists, and Support Systems Finding Purpose through Connections

*Gospel Centered Workshops and Research Presentations  
CE Credits Available*

Keynote Speakers: Ardith Kapp, Allen Bergin, Dean Byrd, Brent Scharman

### ***Distinguished Service to Humanity awarded to Elder Alexander B. Morrison***

- Scot M. Allgood, PhD ● Lili Anderson, PhD ● Christian Anderson, LCSW ● Allen Bergin, PhD  
● Marian Bergin ● Brad Burton, MA ● A. Dean Byrd, PhD ● Mark Chamberlain, PhD
- Doug Craig, PhD ● Tara B. Duncan, MA, MHE ● Lornetta Ferguson, MSW ● Richard Ferre, MD  
● Barbara Gearig, CSW ● Noel C. Gill, Ph.D ● Leland Hardy, MSW/MPA ● Rick Hawks, EdD  
● J. Vance Hendricks, EdD ● Ryan Hulbert, PhD ● Sherrie Mills Johnson, PhD ● Ardith Kapp
- Dennis Perkins, LCSW ● Kristine Plummer, LCSW ● John Rector, PhD ● Rory C. Reid, CSW  
● Brent Scharman, PhD ● Russell Seigenberg, PhD ● Christian Wimmer, BA

Convention Fees*:	both days	one day
Professional members	\$120.00	\$ 85.00
Spouses, Retired members	\$100.00	\$ 70.00
Non-AMCAP members	\$150.00	\$100.00
Students	\$ 60.00	\$ 30.00

#### AMCAP membership:

Professional	\$50.00 annually
Students	\$25.00 annually

*\*Price includes lunch—Pre-Registration is due by March 26, 2004. Registration at the door is \$20.00 extra*

**AMCAP's mission** is to provide information and support for the LDS mental health professional in four areas:  
1. Spiritual Focus 2. Clinical Application 3. Networking and Outreach 4. Research, Theory and Publication  
*As AMCAP members we strive to center our personal and professional lives  
upon Jesus Christ by serving our brothers and sisters in need.*

For a registration form, convention schedule, AMCAP information, or to register online

**please visit our website: [www.amcap.net](http://www.amcap.net)**

For more information, email: [mail@amcap.net](mailto:mail@amcap.net) or call 801-583-6227

---

*The Mission of the Association of Mormon Counselors  
and Psychotherapists is to provide information and support  
for the LDS mental health professional*

---

## **THE ASSOCIATION OF MORMON COUNSELORS AND PSYCHOTHERAPISTS**

B. J. Fullmer, Executive Secretary

2540 East 1700 South, Salt Lake City UT 84108 (801)583-6227 fax (801)583-1305

e-mail: <mail@amcap.net> web site: <http://www.amcap.net>

Marleen S. Williams PhD - *President & Publications*

Noel C. Gill PhD - *Vice-President & Bylaws*

Dean Bender MBA CPA MA - *Treasurer*

Rebecca P. Jorgensen PhD - *Networker Editor*

Richard German Ellsworth PhD - *Journal Editor*

Garison L. Jeppesen LCSW - *Journal Associate Editor*

Rachel E. Crook Lyon PhD - *Student Recruitment & Journal Associate Editor*

John P. Livingstone EdD - *Continuing Education & Ethics*

Russell Seigenberg PhD - *Membership & Outreach & Fall 2004 Convention*

Rick Hawks PhD - *Website Coordinator*

Timothy B. Smith PhD - *Website & Fall 2003 Convention*

Wendy L. Watson PhD - *Elections & Volunteer Coordinator & Fall 2003 Convention*

Douglas Craig PhD - *Bulletin & Spring 2004 Convention*

Kristine Plummer LCSW - *Spring 2004 & Fall 2004 Convention*

Douglas E. Brinley PhD - *Area Coordinator Supervisor*

Larry W. Lewis MA CSW-ASP - *Area Coordinator Asst. Supervisor Eastern U.S. & Europe*

Wesley Spencer PhD - *Area Coordinator Asst. Supervisor Western U.S., Pacific & Asia*

Dana Templeman MSW - *LDSFS Representative*

Janet Scharman, PhD - *General Authority Representative*

Burton C. Kelly PhD - *Historian*

Jonathan Chamberlain PhD - *Assistant Historian*

---

AMCAP Bylaws, Article 1, Section 2, as amended Sept. 30, 1981: "The purpose of the Association shall be: (a) To promote fellowship, foster communication, enhance personal and professional development, and provide a forum for counselors and psychotherapists whose common bond is membership in and adherence to the principles and standards of the Church of Jesus Christ of Latter-day Saints, both in their personal lives and professional practice. (b) To encourage and support members' efforts actively to promote within their other professional organizations and society at large, the adoption and maintenance of moral standards and practices that are consistent with gospel principles."

---

**AMCAP supports the principles and standards of the Church of Jesus Christ of Latter-day Saints; however, it is an independent professional organization which is not sponsored by, nor does it speak for, the Church or its leaders.**

---

**Disclaimer:** All methods, techniques, procedures, applications, theories, research findings and other information described in this Journal, and the views and opinions expressed by the authors, are their own and do not necessarily represent those of the Association of Mormon Counselors and Psychotherapists, nor does their publication in the AMCAP Journal represent or constitute endorsement or promotion of the methods, techniques, procedures, applications, theories, treatments, research or findings by the Association of Mormon Counselors and Psychotherapists. The Association of Mormon Counselors and Psychotherapists expressly disclaims any warranties or guaranties, express or implied, and shall not be liable for damages of any kind in connection with the methods, techniques, procedures, applications, theories, treatments, research findings and other information described or the views and opinions expressed.



Association of Mormon  
Counselors and Psychotherapists  
2540 East 1700 South  
Salt Lake City, UT, 84108

<http://www.amcap.net>

PRESORTED  
STANDARD  
U.S. POSTAGE PAID  
PERMIT NO. 49  
PROVO UT 84601