



Great Basin Naturalist Memoirs

Volume 13 *A Catalog of Scolytidae and
Platypodidae (Coleoptera), Part 2: Taxonomic
Index*

Article 17

1992

Front Matter, Vol. 13A

Follow this and additional works at: <https://scholarsarchive.byu.edu/gbnm>

Recommended Citation

(1992) "Front Matter, Vol. 13A," *Great Basin Naturalist Memoirs*: Vol. 13 , Article 17.
Available at: <https://scholarsarchive.byu.edu/gbnm/vol13/iss1/17>

This Front Matter is brought to you for free and open access by the Western North American Naturalist Publications at BYU ScholarsArchive. It has been accepted for inclusion in Great Basin Naturalist Memoirs by an authorized editor of BYU ScholarsArchive. For more information, please contact scholarsarchive@byu.edu, ellen_amatangelo@byu.edu.

GREAT BASIN NATURALIST MEMOIRS

Number 15

Brigham Young University

1992



A Catalog of Scolytidae and Platypodidae (Coleoptera), Part 2: Taxonomic Index Volume A



12
HARVARD UNIVERSITY



Library of the
Museum of
Comparative Zoology

GREAT BASIN NATURALIST MEMOIRS

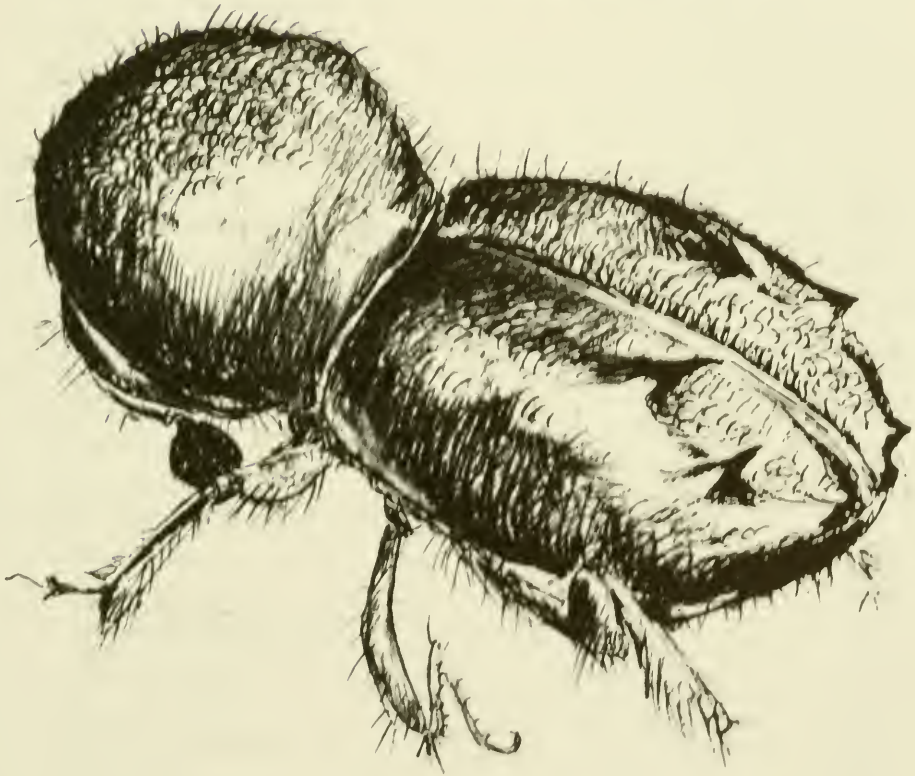
Number 13

Brigham Young University

1992



A Catalog of Scolytidae and Platypodidae (Coleoptera), Part 2: Taxonomic Index Volume A



MCZ
LIBRARY

NOV 15 1993

HARVARD
UNIVERSITY

Copyright © 1992 by Brigham Young University. All rights reserved.
Printed in the United States of America.

ISBN 0-8425-2310-3

CONTENTS

Part 2, Volume A

ABSTRACT	1
INTRODUCTION (English)	1
INTRODUCTION (French)	7
EINLEITUNG (German)	13
INTRODUCCION (Spanish)	19
LIST OF MUSEUM TYPE REPOSITORIES	25
KEY TO SUBJECT AREAS	27
FAMILY SCOLYTIDAE	28
SUBFAMILY HYLESININAE	28
Tribe Hylastini	29
Tribe Hylesinini	64
Tribe Tomicini	103
Tribe Phrixosomini	189
Tribe Hyorrhynchini	191
Tribe Diamerini	193
Tribe Bothrosternini	205
Tribe Phloeotribini	217
Tribe Phloeosinini	236
Tribe Hypoborini	271
Tribe Polygraphini	283
SUBFAMILY SCOLYTINAE	313
Tribe Scolytini	313
Tribe Ctenophorini	383
Tribe Scolytoplatypodini	401
Tribe Micracini	408
Tribe Cactopinini	435
Tribe Carphodieticini	437
Tribe Ipini	438
Tribe Dryocoetini	539
Tribe Crypturgini	615
Tribe Xyloterini	632
Tribe Xyleborini	651

Part 2, Volume B

Tribe Xyloctonini	835
Tribe Cryphalini	842
Tribe Corthylini	949
Subtribe Pityophthorina	949
Subtribe Corthylina	1034
GENERA INCERTAE SEDIS	1082
FAMILY PLATYPODIDAE	1084
SUBFAMILY COPTONOTINAE	1084
Tribe Coptonotinae	1084
Tribe Mecopelmini	1086
Tribe Schedlarini	1087
SUBFAMILY TESSEROCERINI	1088
Tribe Diapodini	1088
Tribe Tesserocerini	1097
SUBFAMILY PLATYPODINAE	1113
Tribe Platypodini	1113
HOST LIST AND SPECIES REPORTED TO ATTACK THEM	1241
SUPPLEMENT TO THE 1987 BIBLIOGRAPHY	1349
ADDENDUM	1440
INDEX FOR PLATYPODIDAE	1441
INDEX FOR SCOLYTIDAE	1460