



12-31-1941

# A bibliography of Utah mammalogy; including references to names and type localities (first supplement)

C. Lynn Hayward  
*Brigham Young University*

Follow this and additional works at: <https://scholarsarchive.byu.edu/gbn>

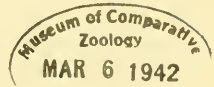
## Recommended Citation

Hayward, C. Lynn (1941) "A bibliography of Utah mammalogy; including references to names and type localities (first supplement)," *Great Basin Naturalist*: Vol. 2 : No. 4 , Article 1.  
Available at: <https://scholarsarchive.byu.edu/gbn/vol2/iss4/1>

This Article is brought to you for free and open access by the Western North American Naturalist Publications at BYU ScholarsArchive. It has been accepted for inclusion in Great Basin Naturalist by an authorized editor of BYU ScholarsArchive. For more information, please contact [scholarsarchive@byu.edu](mailto:scholarsarchive@byu.edu), [ellen\\_amatangelo@byu.edu](mailto:ellen_amatangelo@byu.edu).

# The Great Basin Naturalist

79665  
PUBLISHED BY THE  
DEPARTMENT OF ZOOLOGY AND ENTOMOLOGY  
BRIGHAM YOUNG UNIVERSITY, PROVO, UTAH



---

VOLUME II

DECEMBER 31, 1941

No. 4

---

## A BIBLIOGRAPHY OF UTAH MAMMALOGY; INCLUDING REFERENCES TO NAMES AND TYPE LOCALITIES (FIRST SUPPLEMENT) <sup>(1)</sup>

C. LYNN HAYWARD  
Assistant Professor of Zoology  
Brigham Young University

In 1936 (Proc. Utah Acad. Science, Arts, and Letters, 13: pp. 121-146) the writer compiled and published a list of the known references dealing entirely or in part with Utah mammalogy up to and including the year 1935. The present paper is a continuation of that project, including some references previous to 1935 that were overlooked in the first writing, and bringing the list up to 1941 inclusive. The bibliography for 1941 especially is probably far from complete, but such references as have come to the attention of the writer are herein included.

The same general plan of presentation adopted in the first paper is continued in the present writing. A chronological list of references, alphabetical list of types described from Utah, index to authors, and index to scientific names applied to Utah mammals.

During the past half decade mammalogical work in Utah has progressed rapidly. The period has been marked by an increased interest on the part of local workers. In the last five years there were about twice as many papers published on Utah mammals than there were in the preceding five year period. A total of about 70 papers has been added to the bibliography since 1935. Out of 74 subspecies whose type localities are in Utah, 34 or 45% have been named within the past six years.

---

(1) Contribution No. 96, Department of Zoology and Entomology, Brigham Young University, Provo, Utah.

CHRONOLOGICAL LIST OF REFERENCES ON UTAH MAMMALS  
1845-1935

1845. Fremont, J. C. Report of the exploring expedition to the Rocky Mountains in the year 1842 and to Oregon and North California in the years 1843-44. Washington: Gales and Seaton. 583 pp.
1861. Remy, J. and J. Brechley. A journey to the Great Salt Lake City. London: W. Jeffs, 508 pp.
1877. Allen, J. A. History of the American bison (*Bison Americanus*). Ninth Ann. Report of the U. S. Geol. and Geog. Survey of the Territories Embracing Colorado and Parts of the Adjacent Territories, Being a Report of the Explorations for the Year 1875 by F. V. Hayden, a U. S. Geologist.
1894. Merriam, C. H. Abstract of a study of the American wood rats; with descriptions of fourteen new species and subspecies of the genus *Neotoma*. Proc. Biol. Soc. Washington, 9: pp. 117-128.
1931. Goldman, E. A. Three new rodents from Arizona and New Mexico. Proc. Biol. Soc. Washington, 44: pp. 133-136.
- 1931a. Nelson, E. W. and E. A. Goldman. Three new pumas. Jl. of the Washington Acad. Sci., 21: pp. 210-212.
1933. Anderson, Mark. The future of the beaver in Utah. Utah State Ag. College, Misc. Publ., 10: pp. 30-32.
- 1933a. Hall, E. R. *Sorex leucogenys* in Arizona. Jl. of Mammal., 14: pp. 153-154.
- 1933b. Murie, O. J. Some observations on big game studies. Utah State Ag. College, Misc. Publ., 10: pp. 34-38.
- 1933c. Olsen, O. A. The elk situation in Utah. Utah State Ag. College, Misc. Publ. 10: pp. 43-45.
- 1933d. Parker, T. C. Game management problems of Utah National Parks. Utah State Ag. College, Misc. Publ. 10: pp. 32-34.
1934. Benson, S. B. Descriptions of two new races of *Perognathus intermedius* from Arizona. Proc. Biol. Soc. Washington, 47: pp. 199-202.
- 1934a. Benson, S. B. Description of a race of *Dipodomys merriami* from Arizona. Proc. Biol. Soc. Washington, 47: pp. 181-184.
- 1934b. Hall, E. R. and D. M. Hatfield. A new race of chipmunk from the Great Basin of western United States. Univ. of California Pub. in Zool., 40: pp. 321-325.
1935. Goldman, E. A. Pocket gophers of the *Thomomys bottae*

group in the United States. Proc. Biol. Soc. Washington, 48: pp. 153-158.

1935a. Wright, G. M. Big game and our national parks. Sci. Monthly: pp. 141-147.

1936-1941

1936. Bole, B. P. A new race of kangaroo rat from southwestern Utah. Sci. Publ. Cleveland Mus. Nat. Hist., 5: pp. 1-2.

1936a. Durrant, S. D. A new gopher from Antelope Island, Great Salt Lake. Bull. Univ. of Utah, 27, Biol. Ser. 3: pp. 1-4.

1936b. Hall, E. R. Mustelid mammals from the Pleistocene of North America with systematic notes on some recent members of the genera, *Mustela*, *Taxidea*, and *Mephitis*. Carnegie Institution of Washington, Publ. No. 473: pp. 41-119.

1936c. Hatfield, D. M. A revision of the *Pipistrellus hesperus* group of bats. Jl. of Mammal., 17: pp. 257-262.

1936d. Hayward, C. L. A bibliography of Utah mammalogy, including references to names and type localities applied to Utah mammals. Proc. Utah Acad. Sciences, Arts, and Letters, 13: pp. 121-146.

1936e. Olson, O. A. Elk management. Utah Juniper, 7: pp. 10-15.

1936f. Presnall, C. C. and E. R. Hall. Ranges and relationships of certain mammals of southwestern Utah. Proc. Utah Acad. Sciences, Arts and Letters, 13: pp. 211-213.

1936g. Rasmussen, D. I. Outline of research projects of the Utah wildlife experiment station. Proc. Utah Acad. Sciences, Arts, and Letters, 13: pp. 215-217.

1937. Durrant, S. D. Two new gophers from Utah. Bull. Univ. of Utah, 28, Biol. Series, 3: pp. 1-7.

1937a. Goldman, E. A. Four new mammals from Utah. Proc. Biol. Soc. Washington, 50: pp. 221-226.

1937b. Goldman, E. A. Two new mammals of the *Thomomys bottae* group. Proc. Biol. Soc. Washington, 50: pp. 133-136.

1937c. Goldman, E. A. A new canyon mouse of the genus *Peromyscus* from Arizona. Jl. of Mammal., 18: pp. 92-93.

1937d. Goldman, E. A. The wolves of North America. Jl. of Mammal., 18: pp. 37-45.

1937e. Hall, E. R. and S. D. Durrant. A new kangaroo mouse (*Microdipodops*) of Utah and Nevada. Jl. of Mammal., 18: pp. 357-359.

1937f. Hardy, Ross. Extension of the ranges of the prairie-dogs of

- the genus *Cynomys* in Utah. Proc. Utah Acad. Sciences, Arts, and Letters, 14: pp. 197-198.
- 1937g. Presnall, C. C. Lagurus in southwestern Utah. Jl. of Mammal., 18: p. 369.
- 1937h. Woodbury, A. M. A record of *Tadarida macrotis* from Utah. Jl. of Mammal., 18: p. 515.
1938. Douitt, J. K. Collecting in the Uintah Basin. Carnegie Magazine, 11: pp. 233-238.
- 1938a. Durrant, S. D. and W. H. Behle. A second record of *Tadarida macrotis* from Utah. Jl. of Mammal., 19: p. 500.
- 1938a. Goldman, E. A. Notes on the voles of the *Microtus longicaudus* group. Jl. of Mammal., 19: pp. 491-492.
- 1938c. Goldman, E. A. New pocket gophers of the genus *Thomomys* from Arizona and Utah. Jour. Washington Acad. Sci., 28: pp. 333-343.
- 1938d. Hall, E. R. and D. H. Johnson. Mammals from Millard County, Utah. Proc. Utah Acad. Sciences, Arts and Letters, 15: pp. 121-122.
- 1938e. Hall, E. R. and H. L. Bowlus. A new pika (mammalian genus *Ochotona*) from southeastern Idaho, with notes on near-by subspecies. Univ. of California Pub. in Zool., 42: pp. 335-340.
- 1938f. Hall, E. R. Notes on the meadow mice *Microtus montanus* and *Microtus nanus* with description of a new subspecies from Colorado. Proc. Biol. Soc. Washington, 51: pp. 131-134.
- 1938g. Howell, A. H. Revision of the North American ground squirrels with a classification of North American Sciuridae. U. S. Dept. of Ag., N. A. Fauna, 56: 256 pp.
- 1938h. Huey, L. M. A new maskrat from Utah. Trans. San Diego Soc. Nat. Hist., 8: pp. 409-410.
- 1938i. Huey, L. M. A new form of *Perognathus formosus* from the Mohave Desert region of California. Trans. San Diego Soc. Nat. Hist., 9: pp. 35-36.
- 1938j. Leraas, H. J. Variation in *Peromyscus maniculatus osgoodi* from the Uintah Mountains, Utah. Contr. Lab. Vertebrate Genetics, Univ. of Michigan, No. 6: pp. 1-13.
- 1938k. Presnall, C. C. A survey of the deer situation in Zion Canyon, Utah. Proc. Utah Acad. Sciences, Arts, and Letters, 15: pp. 107-110.
- 1938l. Presnall, C. C. Mammals of Zion-Bryce and Cedar Breaks. Zion-Bryce Museum Bull., No. 2.

- 1938m. Presnall, C. C. Evidences of the bison in southwestern Utah. *Jl. of Mammal.*, 19: pp. 111-112.
1939. Benson, S. B. and R. M. Bond. Notes on *Sorex merriami* Dobson. *Jl. of Mammal.*, 20: pp. 348-351.
- 1939a. Davis, W. B. The recent mammals of Idaho. Caldwell, Idaho: Caxton Printers, 400 pp.
- 1939b. Dixon, J. S. and E. L. Sumner. The deer problem, deer trapping and deer removal at Zion Canyon, Utah. *Trans. of the 4th N. A. Wildlife Conference (1939)*, Washington, D. C.
- 1939c. Durrant, S. D. Two new gophers (Mammalian genus *Thomomys* from western Utah. *Proc. Biol. Soc. Wash.*, 52: pp. 159-162.
- 1939d. Durrant, S. D. A new pocket gopher from the Oquirrh Mountains, Utah. *Bull. Univ. Utah*, 30, Biol. Ser. 5: pp. 1-6.
- 1939e. Durrant, S. D. A new pocket gopher of the *Thomomys quadratus* group from the northern Great Basin region. *Bull. Univ. of Utah*, 29, Biol. Ser. 6: pp. 1-6.
- 1939f. Durrant, S. D. and E. Raymond Hall. Deux sous-espèces nouvelles du rongeur "*Dipodomys ordii*" de l'ouest des États-Unis d'Amérique. *Mammalia*, 3: pp. 10-16.
- 1939g. Goldman, E. A. Nine new mammals from islands in Great Salt Lake, Utah. *Jl. of Mammal.*, 20: pp. 351-357.
- 1939h. Goldman, E. A. Remarks on the pocket gophers, with special reference to *Thomomys talpoides*. *Jl. of Mammal.*, 20: pp. 231-244.
- 1939i. Hall, E. R. and F. H. Dale. Geographic races of the kangaroo rat, *Dipodomys microps*. *Occasional Papers of the Mus. of Zool., Louisiana State Univ.*, No. 4: pp. 47-62.
- 1939j. Huey, L. M. A new silky pocket mouse from southwestern Utah. *Trans. San Diego Soc. Nat. Hist.*, 9: pp. 55-56.
- 1939k. Kelker, G. H. A mathematical study of predatory-prey relationships. *Proc. Utah Acad. Sciences, Arts, and Letters*, 16: pp. 77-81.
- 1939l. Rasmussen, D. I. Mule deer range and population studies in Utah. *4th N. A. Wildlife Conference Trans.*, pp. 236-243.
- 1939m. Rasmussen, D. I. Utah's mule deer studies and management problems. *American Wildlife*, Sept.-Oct., 1939.
1940. Clarke, Franck C. Facts about and experiences with coyotes. *The Nat. Wool Grower*, Salt Lake City, 30: pp. 19-22.
- 1940a. Cowan, M. Distribution and variation in the native sheep of North America. *Amer. Midland Nat.*, 24: pp. 505-580.

- 1940b. Duke, K. L. A preliminary histological study of the ovary of the kangaroo rat, *Dipodomys ordii columbianus*. Great Basin Nat., 1: pp. 63-72.
- 1940c. Hall, E. R. and D. F. Hoffmeister. The pinyon mouse *Peromyscus truei* in Nevada, with description of a new subspecies. Univ. of California Publ. in Zool., 42: pp. 401-406.
- 1940d. Hayward, C. L. Feeding habits of the red squirrel. Jl. of Mammal., 21: p. 220.
- 1940e. Hooper, E. T. Geographic variation in bushy-tailed wood rats. Univ. of California Publ. in Zool., 42: pp. 407-424.
- 1940f. Kelker, G. H. Further mathematical studies in prey-predator relationships. Proc. Utah Acad. Sciences, Arts, and Letters, 17: pp. 59-64.
- 1940g. Kelker, G. H. Estimating deer populations by a differential hunting loss in the sexes. Proc. Utah Acad. Sciences, Arts, and Letters, 17: pp. 65-69.
- 1940h. Long, W. S. Notes on the life histories of some Utah mammals. Jl. of Mammal., 21: pp. 170-180.
- 1940i. Marshall, W. H. A survey of the mammals of the islands of Great Salt Lake, Utah. Jl. of Mammal., 21: pp. 144-159.
- 1940j. Rasmussen, D. I. Beaver-trout relationship in the Rocky Mountain region. Trans. 5th N. A. Wildlife Conference, pp. 256-263.
- 1940k. Rasmussen, D. I. Panel discussion: Is the Farmer-sportsman council the answer? Trans. 5th N. A. Wildlife Conference, Washington, D. C., pp. 55-60.
- 1940l. Tanner, V. M. The flying squirrel collected in Garfield County, Utah. Great Basin Nat., 1: p. 126.
- 1940m. Tanner, V. M. John E. Blazzard contributes mammal collection. Great Basin Nat., 1: p. 146.
- 1940n. Tanner, V. M. A biotic study of the Kaiparowits region of Utah. Great Basin Nat., 1: pp. 97-126.
- 1940o. Tanner, V. M. A chapter on the natural history of the Great Basin, 1800-1855. Great Basin Nat., 1: pp. 33-61.
- 1940p. Vorhies, C. T. and W. P. Taylor. Life history and ecology of the white-throated wood rat, *Neotoma albigula albigula* Hartley, in relation to grazing in Arizona. Univ. of Arizona, Ag. Exp. Sta., Tech. Bull. No. 86: pp. 455-592.
- 1941g. Doult, J. K. New *Clethrionomys* from Utah and Pennsylvania. Proc. Biol. Soc. Wash., 54: pp. 161-164.
1941. Goldman, E. A. Remarks on voles of the genus *Lemmiscus*

- with one described as new. Proc. Biol. Soc. Wash., 54: pp. 69-72.
- 1941a. Hall, E. R. and C. L. Hayward. Three new mammals (*Microtus* and *Ochotona*) from Utah. Great Basin Nat., 2: 106-108.
- 1941b. Hall, E. R. New heteromyid rodents from Nevada. Proc. Biol. Soc. Wash., 54: pp. 55-62.
- 1941c. Hall, E. R. and S. D. Durrant. Two new kangaroo mice from Utah. Murrelet, 22: pp. 5-7.
- 1941h. Hall, E. R. Revision of the rodent genus *Microdipodops*. Papers on Mammalogy, Zool. Ser. Field Mus. Nat. Hist., 27: pp. 233-277.
- 1941d. Hardy, Ross. Some notes on Utah bats. Jl. of Mammal., 22: pp. 289-295.
- 1941e. Hardy, Ross. Dark coloration of some specimens of *Peromyscus crinitus crinitus*. Jl. of Mammal., 22: pp. 90-91.
- 1941f. Kelker, G. H. Suggested phases of big game management. Proc. Utah Acad. Sciences, Arts, and Letters, 18: pp. 55-57.

## ALPHABETICAL LIST OF TYPES OF UTAH MAMMALS

1. *Clethrionomys gapperi uintaensis* Doult, Proc. Biol. Soc. Washington, 54: pp. 161-162, Dec. 8, 1941. TYPE: Paradise Park, 45 mi. N. W. Vernal, Uintah County, July 14, 1933.
2. *Dipodomys merriami frenatus* Bole, Sci. Publ. Cleveland Mus. Nat. Hist. 5: pp. 1-2, 1936. TYPE: Toquerville, Washington Co., May 14, 1934 (B. P. Bole).
3. *Dipodomys microps bonnevilliei* Goldman, Proc. Biol. Soc. Wash., 50: pp. 222-223, December 28, 1937. TYPE: Kelton, Boxelder County, November 7, 1891 (V. Bailey).
4. *Dipodomys microps russeolus* Goldman, Jl. of Mammal., 20: pp. 353-354, August 14, 1939. TYPE: Dolphin Island, Great Salt Lake, June 5, 1938 (W. H. Marshall).
5. *Dipodomys microps subtenuis* Goldman, Jl. of Mammal., 20 p. 354, August 14, 1939. TYPE: Carrington Island, Great Salt Lake, June 30, 1938 (W. H. Marshall).
6. *Dipodomys ordii alfredi* Goldman, Proc. Biol. Soc. Wash., 50: pp. 221-222, December 28, 1937. TYPE: Gunnison Island, Great Salt Lake, June 1, 1937 (Alfred M. Bailey and Robert J. Niedrach).
7. *Dipodomys ordii celeripes* Durrant and Hall, Mammalia (Paris), 3: pp. 10-16, March, 1939. TYPE: Trout Creek, Juab Co., May 5, 1937 (S. D. Durrant).
8. *Dipodomys ordii cineraceus* Goldman, Jl. of Mammal., 20: pp. 352-353, August 14, 1939. TYPE: Dolphin Island, Great Salt Lake (W. H. Marshall).
9. *Dipodomys ordii marshalli* Goldman, Proc. Biol. Soc. Wash., 50: pp. 223-224, December 28, 1937. TYPE: Bird Island, Great Salt Lake, June 22, 1937 (W. H. Marshall).
10. *Microdipodops megacephalus leucotis* Hall and Durrant, Murrelet, 22: pp. 6-7, April 30, 1941. TYPE: 18 miles SW Orr's Ranch, Tooele Co., June 6, 1940 (S. D. Durrant).
11. *Microdipodops megacephalus paululus* Hall and Durrant, Murrelet, 22: pp. 5-6, April 30, 1941. TYPE: Pine Valley, Millard Co., July 17, 1940 (S. D. Durrant).



12. *Microtus montanus amosus* Hall and Hayward, Great Basin Nat., 2: pp. 105-106, July 20, 1941. TYPE: Torrey, Wayne Co., June 18, 1938 (J. W. Bee).
13. *Microtus montanus nexus* Hall and Hayward, Great Basin Nat., 2: pp. 106-107, July 20, 1941. TYPE: West Canyon, Oquirrh Range, Utah County, August 3, 1939 (J. W. Bee).
14. *Neotoma lepida marshalli* Goldman, JI. of Mammal., 20: p. 357, August 14, 1939. TYPE: Carrington Island, Great Salt Lake, July 2, 1938 (W. H. Marshall).
15. *Ochotona princeps utahensis* Hall and Hayward, Great Basin Nat., 2: pp. 107-108, July 20, 1941. TYPE: Two miles W. Deer Lake, Garfield Co., June 25, 1938 (G. S. Cannon).
16. *Ondatra zibethica goldmani* Huey, Trans. San Diego Soc. Nat. Hist., 8: pp. 409-410, January 18, 1938. TYPE: St. George, Washington Co., August 11, 1937 (L. M. Huey).
17. *Onychomys leucogaster utahensis* Goldman, JI. of Mammal., 20: pp. 354-355, August 14, 1939. TYPE: Stansbury Island, Great Salt Lake, June 22, 1938 (W. H. Marshall).
18. *Perognathus longimembris virginis* Huey, Trans. San Diego Soc. Nat. Hist., 9: pp. 55-56, August 31, 1939. TYPE: Saint George, Washington County, August 12, 1937 (L. M. Huey).
19. *Perognathus parvus plerius* Goldman, JI. Mammal., 20: p. 352, August 14, 1939. TYPE: Stansbury Island, Great Salt Lake, June 23, 1938 (W. H. Marshall).
20. *Peromyscus crinitus pergracilis* Goldman, JI. of Mammal., 20: pp. 356-357, August 14, 1939. TYPE: Stansbury Island, Great Salt Lake, June 22, 1938 (W. H. Marshall).
21. *Peromyscus maniculatus inclarus* Goldman, JI. of Mammal., 20: pp. 355-356, August 14, 1939. TYPE: Fremont Island, Great Salt Lake, August 7, 1938 (W. H. Marshall).
22. *Peromyscus maniculatus gunnisoni* Goldman, Proc. Biol. Soc. Washington, 50: pp. 224-225, December 28, 1937. TYPE: Gunnison Island, Great Salt Lake, June 1, 1937 (A. M. Bailey and R. J. Niedrach).
23. *Reithrodontomys megalotis rarus* Goldman, JI. of Mammal., 20: p. 355, August 14, 1939. TYPE: Stansbury Island, Great Salt Lake, June 26, 1938 (W. H. Marshall).
24. *Thomomys bottae birdseyei* Goldman, Proc. Biol. Soc. Wash., 50: pp. 134-135, September 10, 1937. TYPE: Pine Valley Mts., five miles east of Pine Valley, Washington Co., October 10, 1909 (Clarence Birdseye).
25. *Thomomys bottae convexus* Durrant, Proc. Biol. Soc. Washington, 52: pp. 159-162, October 11, 1939. TYPE: E. side Clear Lake, Millard Co., May 20, 1938 (S. D. Durrant).
26. *Thomomys bottae minimus* Durrant, Proc. Biol. Soc. Washington, 52: pp. 159-162, October 11, 1939. TYPE: Stansbury Island, Great Salt Lake, June 25, 1938 (W. H. Marshall).
27. *Thomomys bottae nesophilus* Durrant, Bull. Univ. Utah, 27, Biol. Ser. 3: pp. 1-4, October 3, 1936. TYPE: Antelope Island, Great Salt Lake, April 20, 1935 (S. D. Durrant).
28. *Thomomys bottae ticius* Durrant, Bull. Univ. Utah, 28, Biol. Ser. 3: pp. 1-7, August 18, 1937. TYPE: Oak Creek Canyon, 6 miles E. of Oak City, Millard Co., September 14, 1936 (S. D. Durrant).
29. *Thomomys bottae wahwahensis* Durrant, Bull. Univ. Utah, 28, Biol. Ser. 3: pp. 1-7, August 18, 1937. TYPE: Wah Wah Springs, 30 miles W of Millford, Beaver County, Utah, July 22, 1936 (S. D. Durrant).
30. *Thomomys talpoides gracilis* Durrant, Bull. Univ. Utah, 29, Biol. Ser. 3: pp. 1-6, February 28, 1939. TYPE: Pine Canyon, 17 miles NW Kelton, Boxelder County, Utah, July 12, 1930 (Annie M. Alexander). (Described as *T. quadratus gracilis*.)
31. *Thomomys talpoides moorei* Goldman, JI. Washington Acad. Sci. 28: pp. 335-336, July 15, 1938. TYPE: One mile S of Fairview, Sanpete Co., February 19, 1928 (A. W. Moore). (Described as *T. fossor moorei*.)
32. *Thomomys talpoides oquirrhensis* Durrant, Bull. Univ. Utah, 30, Biol. Ser.

- 6: pp. 1-6, October 24, 1939. TYPE: Settlement Creek, Oquirrh Mountains, Tooele County (S. D. Durrant).
33. *Thomomys talpoides levis* Goldman, Jl. Washington Acad. Sci., 28: pp. 336-337, July 15, 1938. TYPE: Seven Mile Flat, 5 miles N of Fish Lake, Sevier Co., October 1, 1908 (W. H. Osgood). (Described as *T. fossor levis*.)
34. *Thomomys talpoides parowanensis* Goldman, Jl. Washington Acad. Sci., 28: pp. 334-335, July 15, 1938. TYPE: Bryan Head, Parowan Mountains, Iron County, September 8, 1908 (W. H. Osgood). (Described as *T. fossor parowanensis*.)

## INDEX TO AUTHORS ON UTAH MAMMALS

Note: Dates following the names of authors and also in the indexes of scientific and common names refer to the papers listed in the chronological list of references.

- Allen, J. A., 1877; Anderson, Mark, 1933.
- Behle, W. H., 1938a; Benson, S. B., 1934a, 1939; Bole, B. P., 1936; Bond, R. M., 1939; Bowlus, H. L., 1938e; Brenchley, J., 1861.
- Clarke, Franck C., 1940; Cliff, E. P., 1936a; Cowan, M., 1940a.
- Davis, W. B., 1939a; Dale, F. H., 1939i; Dixon, J. S., 1939b; Doult, J. K., 1938, 1941g; Duke, K. J., 1940b; Durrant, S. D., 1936a, 1937, 1937e, 1939c, 1939d, 1939e, 1939f, 1941c.
- Fremont, J. C., 1845.
- Goldman, E. A., 1931, 1931a, 1935, 1937a, 1937b, 1937c, 1937d, 1938b, 1938c, 1939g, 1939h, 1941.
- Hall, E. R., 1933a, 1934b, 1936f, 1936k, 1937e, 1938d, 1938e, 1938f, 1939f, 1939i, 1940c, 1941a, 1941b, 1941c, 1941h; Hardy, Ross, 1937f, 1941d, 1941e; Hatfield, D. M., 1934b, 1936c; Hayward, C. L., 1936d, 1940d, 1941a; Hoffmeister, D. F., 1940c; Hooper, E. T., 1940e; Howell, A. H., 1938g; Huey, L. M., 1938b, 1938i, 1939j.
- Johnson, D. H., 1938d.
- Kelker, G. H., 1939k, 1940g, 1941f.
- Leraas, H. J., 1938j; Long, W. S., 1940h.
- Marshall, W. H., 1940i; Merriam, C. H., 1894; Murie, O. J., 1933b.
- Nelson, E. W., 1931a.
- Olsen, O. A., 1933c, 1936e.
- Parker, T. C., 1933d; Presnall, C. C., 1936f, 1937g, 1938k, 1938l, 1938m.
- Rasmussen, D. I., 1936g, 1939l, 1939m, 1940k, 1940j; Remy, I., 1861.
- Sumner, E. L., 1939b.
- Tanner, V. M., 1940l, 1940m, 1940n, 1940o; Taylor, W. P., 1940p.
- Vorhies, C. T., 1940p.
- Woodbury, A. M., 1937h; Wright, G. M., 1935a.

## INDEX TO SCIENTIFIC NAMES APPLIED TO UTAH MAMMALS

- Ammospermophilus leucurus cinnamomeus*: 1938l, p. 11; 1940n, p. 104.  
*Ammospermophilus leucurus leucurus*: 1938d, p. 121.  
*Ammospermophilus pallidus pacificus*: 1938l, p. 6; 1941d, p. 293.  
*Antrozous pallidus pallidus*: 1941d, p. 293.  
*Antilocapra americana americana*: 1938l, p. 20; 1940o, p. 104.  
*Bassariscus astutus nevadensis*: 1938l, p. 7.  
*Bison americanus*: 1877, p. 512; 1938l, p. 20; 1938m, p. 111; 1940o, p. 39.  
*Canis estor*: 1940n, p. 104.  
*Canis latrans lestes*: 1938d, p. 121; 1938l, p. 9; 1940i, pp. 151, 152, 154, 156.  
*Canis lupus youngi*: 1937d, p. 40; 1938l, p. 9.  
*Castor canadensis*: 1940h, p. 177.  
*Castor canadensis repentinus*: 1938l, p. 14.  
*Cervus canadensis nelsoni*: 1938l, p. 19.  
*Citellus armatus*: 1938g, p. 80.  
*Citellus lateralis castanurus*: 1938g, p. 202.  
*Citellus lateralis lateralis*: 1938g, p. 194; 1940h, p. 174; 1940n, p. 109.  
*Citellus lateralis trepidus*: 1938g, p. 208.  
*Citellus leucurus cinnamomeus*: 1938g, p. 175.  
*Citellus leucurus leucurus*: 1938g, p. 173; 1940h, p. 174.  
*Citellus leucurus pennipes*: 1938g, p. 175.  
*Citellus mollis mollis*: 1938d, p. 121; 1939a, p. 190.  
*Citellus spilosoma cryptospilotus*: 1938g, p. 130.  
*Citellus townsendii mollis*: 1938g, p. 63; 1940h, p. 174; 1940i, p. 151.  
*Citellus tridecemlineatus parvus*: 1938g, p. 117.  
*Citellus variegatus grammurus*: 1938g, p. 145.  
*Citellus variegatus utah*: 1938g, p. 147; 1938l, p. 11; 1940h, p. 173.  
*Clethrionomys gapperi uintaensis*: 1941g, p. 161.  
*Corynorhinus rafinesquii pallescens*: 1940h, p. 172; 1941d, p. 293.  
*Cynomys gunnisoni zuniensis*: 1937f, p. 197.  
*Cynomys leucurus*: 1937f, p. 197.  
*Cynomys parvidens*: 1937f, p. 197; 1938l, p. 12; 1940h, p. 175; 1940n, p. 109.  
*Dipodomys merriami frenatus*: 1936, p. 1; 1940h, p. 176.  
*Dipodomys merriami merriami*: 1938l, p. 14; 1940n, p. 146.  
*Dipodomys microps alfredi*: 1937a, p. 221; 1939i, p. 59; 1940i, p. 152.  
*Dipodomys microps bonnevilliei*: 1937a, p. 222; 1939i, p. 58.  
*Dipodomys microps celsus*: 1939i, p. 60; 1940h, p. 176; 1940n, p. 146.  
*Dipodomys microps levipes*: 1938d, p. 121.  
*Dipodomys microps russeolus*: 1939g, p. 353; 1940i, p. 151.  
*Dipodomys microps subtenuis*: 1939g, p. 354; 1939i, p. 62; 140i, p. 153.  
*Dipodomys ordii celeripes*: 1939f, p. 10.  
*Dipodomys ordii cineraceus*: 1939g, p. 252; 1940i, p. 144.  
*Dipodomys ordii columbianus*: 1938d, p. 121; 1940m, p. 146.  
*Dipodomys ordii cupidineus*: 1940h, p. 176; 1940m, p. 146; 1940n, p. 104.  
*Dipodomys ordii fetosus*: 1939f, p. 14.  
*Dipodomys ordii marshalli*: 1937a, p. 223; 1940i, p. 152.  
*Dipodomys ordii utahensis*: 1940i, p. 155.  
*Eptesicus fuscus pallidus*: 1938l, p. 6; 1940h, p. 173; 1941d, p. 292.  
*Erethizon epixanthum epixanthum*: 1938l, p. 18; 1940h, p. 179.  
*Euderma maculata*: 1941d, p. 293.  
*Eutamias adsitus*: 1940n, p. 109.  
*Eutamias dorsalis utahensis*: 1938l, p. 12; 1940h, p. 175.  
*Eutamias quadrivittatus inyoensis*: 1938l, p. 12; 1940h, p. 175.  
*Eutamias minimus consobrinus*: 1938l, p. 12; 1940n, p. 112; 1940h, p. 175.  
*Eutamias minimus pictus*: 1939a, p. 208; 1934b, p. 322.  
*Eutamias minimus scrutator*: 1934b, p. 321; 1938d, p. 121.  
*Felis concolor kaibabensis*: 1931a, p. 210; 1938l, p. 9.  
*Glaucomys sabrinus lucifugus*: 1940l, p. 126.  
*Lasionycteris noctivagans*: 1940n, p. 104; 1941e, p. 280.

- Lasiurus borealis teliotis*: 1941d, p. 292.  
*Lasiurus cinereus*: 1941d, p. 292.  
*Lemmiscus curtatus levidensis*: 1941, p. 69.  
*Lemmiscus curtatus pauperrimus*: 19381, p. 16.  
*Lepus californicus deserticola*: 19381, p. 18; 1940n, p. 104; 1940h, p. 179; 1940i, p. 156.  
*Lepus townsendii townsendii*: 19381, p. 18.  
*Lynx baileyi*: 19381, p. 10.  
*Lynx rufus pallascens*: 1938d, p. 121.  
*Lynx rufus uinta*: 19381, p. 10.  
*Marmota flaviventris engelhardti*: 19381, p. 11; 1940h, p. 173; 1940m, p. 146.  
*Martes caurina origenes*: 1939a, p. 130.  
*Mephitis mephitis estor*: 19381, p. 8.  
*Mephitis mephitis major*: 1936b, p. 66; 1940i, p. 157.  
*Microdipodops megacephalus leucotis*: 1941c, p. 6; 1941h, p. 266.  
*Microdipodops megacephalus paululus*: 1941c, p. 5; 1941h, p. 265.  
*Microdipodops pallidus albiventer*: 1937e, p. 357; 1938d, p. 121.  
*Microtus longicaudus latus*: 1938b, p. 492.  
*Microtus montanus*: 1940h, p. 178.  
*Microtus montanus amosus*: 1941a, p. 105.  
*Microtus montanus micropus*: 1938d, p. 123; 1938f, p. 132; 19381, p. 16.  
*Microtus montanus nexus*: 1941a, p. 106.  
*Microtus montanus ricularis*: 1938f, p. 132.  
*Microtus mordax mordax*: 19381, p. 16; 1940h, p. 178; 1940n, p. 112.  
*Mustela frenata nevadensis*: 1936b, p. 91; 19381, p. 7.  
*Myotis californicus californicus*: 1941d, p. 290.  
*Myotis californicus pallidus*: 1941d, p. 290.  
*Myotis evotis chrysonotus*: 1941d, p. 290.  
*Myotis lucifugus carissima*: 1941d, p. 289.  
*Myotis lucifugus phasma*: 1941d, p. 289.  
*Myotis subulatus melanorhinus*: 19381, p. 6; 1941d, p. 290.  
*Myotis subulatus subulatus*: 1941d, p. 290.  
*Myotis thysanodes thysanodes*: 1941d, p. 290.  
*Myotis velifer incautus*: 1941d, p. 290.  
*Myotis volans interior*: 1941d, p. 290.  
*Myotis yumanensis sociabilis*: 1941d, p. 290.  
*Myotis yumanensis yumanensis*: 1941d, p. 289.  
*Neotoma albigula brevicauda*: 1940p, p. 461.  
*Neotoma cinerea acraia*: 1940e, p. 415.  
*Neotoma cinerea arizonae*: 1940e, p. 422.  
*Neotoma cinerea cinerea*: 19381, p. 16; 1940h, p. 178; 1940n, p. 109.  
*Neotoma lepida marshalli*: 1939g, p. 357; 1940i, p. 153.  
*Neotoma lepida monstabilis*: 19381, p. 15; 1940h, p. 170; 1940n, p. 109.  
*Nycteris borealis teliotis*: 19381, p. 6.  
*Ochotona princeps cinnamomea*: 1940h, p. 179.  
*Ochotona princeps fuscipes*: 19381, p. 18; 1940h, p. 179.  
*Ochotona princeps uinta*: 1938e, p. 336.  
*Ochotona princeps utahensis*: 1941a, p. 107.  
*Odocoileus hemionus macrotis*: 1938k, p. 107; 19381, p. 19; 1939b, p. 231; 1939l, p. 236; 1940h, p. 180.  
*Ondatra zibethica goldmani*: 1938b, p. 409.  
*Ondatra zibethica mergens*: 1938d, p. 122.  
*Onychomys leucogaster brevicaudus*: 1938d, p. 121.  
*Onychomys leucogaster melanophrys*: 19381, p. 15; 1940h, p. 177.  
*Onychomys leucogaster utahensis*: 1939g, p. 354; 1940i, p. 144.  
*Onychomys torridus longicaudus*: 19381, p. 15; 1940h, p. 177.  
*Ovis canadensis nelsoni*: 19381, p. 20.  
*Ovis canadensis canadensis*: 1940a, p. 540.  
*Perognathus formosus formosus*: 1938i, p. 36; 19381, p. 14; 1940h, p. 176.  
*Perognathus longimembris arizonensis*: 1940n, p. 104.  
*Perognathus longimembris gulosus*: 1941b, p. 55.

- Perognathus longimembris nevadensis*: 1938d, p. 121.  
*Perognathus longimembris virginis*: 1939j, p. 55.  
*Perognathus parvus plerius*: 1939g, p. 352; 1940i, p. 153.  
*Peromyscus boylii rowleyi*: 1938l, p. 15; 1940h, p. 178; 1940m, p. 146.  
*Peromyscus crinitus auripectus*: 1938l, p. 15.  
*Peromyscus crinitus crinitus*: 1940h, p. 178; 1941e, p. 90.  
*Peromyscus crinitus pergracilis*: 1939g, p. 256; 1940i, p. 155.  
*Peromyscus crinitus peridoncus*: 1937c, p. 92.  
*Peromyscus eremicus eremicus*: 1940h, p. 178.  
*Peromyscus maniculatus gunnisoni*: 1937a, p. 224; 1940i, p. 152.  
*Peromyscus maniculatus inclarus*: 1939g, p. 355; 1940i, p. 157.  
*Peromyscus maniculatus osgoodi*: 1938j, p. 1.  
*Peromyscus maniculatus sonoriensis*: 1938d, p. 121; 1938l, p. 15; 1940h, p. 177; 1940i, p. 151; 1940n, p. 104.  
*Peromyscus truei truei*: 1938l, p. 15; 1940c, p. 401; 1940h, p. 178.  
*Pipistrellus hesperus hesperus*: 1936c, p. 258; 1938l, p. 6; 1940n, p. 104; 1941d, p. 291.  
*Procyon lotor pallidus*: 1938l, p. 7.  
*Reithrodontomys megalotis megalotis*: 1938d, p. 121; 1938l, p. 15; 1940h, p. 177.  
*Reithrodontomys megalotis rarus*: 1939g, p. 355; 1940i, p. 154.  
*Sorex merriami leucogenys*: 1933a, p. 154; 1939, p. 350.  
*Sorex obscurus obscurus*: 1938l, p. 6.  
*Sorex palustris navigator*: 1938l, p. 6; 1936f, p. 211; 1940n, p. 109; 1940h, p. 172.  
*Spilogale gracilis saxatilis*: 1938l, p. 8.  
*Sylvilagus auduboni arizonae*: 1938l, p. 18.  
*Sylvilagus auduboni warreni*: 1940n, p. 109.  
*Sylvilagus nuttalli grangeri*: 1938l, p. 18; 1940h, p. 180; 1940i, pp. 153, 154, 156, 157.  
*Tadarida macrotis*: 1938l, p. 7; 1941d, p. 294.  
*Tadarida mexicana*: 1938l, p. 7; 1940h, p. 173; 1941d, p. 294.  
*Tamiasciurus fremonti fremonti*: 1938l, p. 13; 1940h, p. 175.  
*Tamiasciurus hudsonicus ventorum*: 1940, p. 220.  
*Taxidea taxus berlandieri*: 1940n, p. 109.  
*Taxidea taxus taxus*: 1938l, p. 8; 1938d, p. 121.  
*Thomomys bottae absonus*: 1940n, p. 104.  
*Thomomys bottae birdseyei*: 1937, p. 134.  
*Thomomys bottae centralis*: 1938d, p. 121; 1938l, p. 14.  
*Thomomys bottae convexus*: 1939c, p. 159.  
*Thomomys bottae minimus*: 1939c, p. 161; 1940i, p. 154.  
*Thomomys bottae planirostris*: 1938l, p. 14; 1940h, p. 176.  
*Thomomys fossor*: 1938l, p. 14; 1940n, p. 109.  
*Thomomys fossor levis*: 1938c, p. 336.  
*Thomomys fossor moorei*: 1938c, p. 335.  
*Thomomys fossor parocwanensis*: 1938c, p. 334.  
*Thomomys quadratus gracilis*: 1939e, p. 1.  
*Thomomys talpoides levis*: 1939g, p. 234.  
*Thomomys talpoides moorei*: 1939g, p. 234.  
*Thomomys talpoides parocwanensis*: 1939g, p. 234; 1940h, p. 176.  
*Thomomys talpoides uinta*: 1939h, p. 234.  
*Thomomys uinta*: 1939a, p. 259.  
*Urocyon cinereoargenteus scotti*: 1938l, p. 8.  
*Ursus americanus amblyceps*: 1938l, p. 7.  
*Ursus utahensis*: 1938l, p. 7.  
*Vulpes fulva macroura*: 1938l, p. 8.  
*Zapus princeps cinereus*: 1939a, p. 243.