



12-31-1942

Front Matter, Vol. 3 No. 3–4

Follow this and additional works at: <https://scholarsarchive.byu.edu/gbn>

Recommended Citation

(1942) "Front Matter, Vol. 3 No. 3–4," *Great Basin Naturalist*. Vol. 3 : No. 3 , Article 6.
Available at: <https://scholarsarchive.byu.edu/gbn/vol3/iss3/6>

This Front Matter is brought to you for free and open access by the Western North American Naturalist Publications at BYU ScholarsArchive. It has been accepted for inclusion in Great Basin Naturalist by an authorized editor of BYU ScholarsArchive. For more information, please contact scholarsarchive@byu.edu, ellen_amatangelo@byu.edu.

The Great Basin Naturalist

December 31, 1942

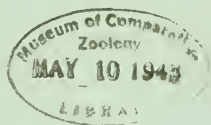


TABLE OF CONTENTS

	Page
Breeding Records of Utah Birds, Robert G. Bee and John Hutchings	61
John Hutchings and Robert G. Bee — Pioneer Utah Valley Naturalists, C. Lynn Hayward	86
Life History Notes on the California Gull, No. 1, D. Elden Beck	91
A Frequency Distribution of Eastern and Western Kingbirds in Montana, Robert W. Hiatt	109
Index to Volume III	115



Published at Provo, Utah, by the
 Department of Zoology and Entomology of
 Brigham Young University

The Great Basin Naturalist

VASCO M. TANNER, *Editor*

C. LYNN HAYWARD, *Assistant Editor*

A journal published four times a year by the Department of Zoology and Entomology, Brigham Young University, Provo, Utah.

MANUSCRIPTS. Only original unpublished manuscripts, pertaining to the Great Basin and the Western United States in the main, will be accepted. Manuscripts are subjected to the approval of the editor.

ILLUSTRATIONS. All illustrations should be made with a view to having them appear within the limits of the printed page. The illustrations that form a part of an article should accompany the manuscript. All half-tones or zinc etchings to appear in this Journal are to be made under the supervision of the editor, and the cost of the cuts is to be borne by the contributor.

REPRINTS. No reprints are furnished free of charge. A price list for reprints and an order form is sent with the proof.

SUBSCRIPTION. The annual subscription is \$1.50, (outside the United States, \$2.00). Single number, 50 cents.

All correspondence dealing with manuscripts, subscriptions, reprints and other business matters should be addressed to the Editor, Great Basin Naturalist, Brigham Young University, Provo, Utah.

REPRINT SCHEDULE OF THE GREAT BASIN NATURALIST

							Each Additional
	2 pp.	4 pp.	6 pp.	8 pp.	10 pp.	12 pp.	2 pp.
50 copies	\$2.00	\$3.50	\$4.50	\$5.50	\$6.50	\$7.50	.95
100 copies	3.50	4.50	5.50	6.50	7.50	8.50	
200 copies	4.75	5.75	6.75	7.75	8.75	9.75	
300 copies	5.75	6.75	7.75	8.75	9.75	10.75	

Covers: \$5.00 for first 100 copies; \$2.00 for additional 100 copies.